

BID OF _____

2017

PROPOSAL, CONTRACT, BOND AND SPECIFICATIONS

FOR

2017 PARK PLAYGROUND IMPROVEMENTS - GROUP 3

CONTRACT NO. 7929

**MUNIS NO.
17347-51-130
17435-51-130
17346-51-130**

IN

MADISON, DANE COUNTY, WISCONSIN

AWARDED BY THE COMMON COUNCIL
MADISON, WISCONSIN ON _____

CITY ENGINEERING DIVISION
1600 EMIL STREET
MADISON, WISCONSIN 53713

<https://bidexpress.com/login>

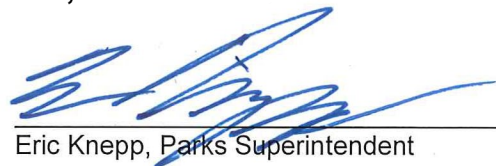
**2017 PARK PLAYGROUND IMPROVEMENTS - GROUP 3
CONTRACT NO. 7929**

INDEX

SECTION A: ADVERTISEMENT FOR BIDS AND INSTRUCTIONS TO BIDDERSA-1
SECTION B: PROPOSAL SECTION.....B-1
SECTION C: SMALL BUSINESS ENTERPRISE C-1
SECTION D: SPECIAL PROVISIONS..... D-1
SECTION E: BIDDER'S ACKNOWLEDGEMENTE-1
SECTION F: BEST VALUE CONTRACTINGF-1
SECTION G: BID BOND G-1
SECTION H: AGREEMENT H-1
SECTION I: PAYMENT AND PERFORMANCE BONDI-1
ATTACHMENT 1: MANUFACTURER INSTALLATION SPECIFICATIONS
ATTACHMENT 2: SOIL BORINGS

This Proposal, and Agreement have
been prepared by:

**CITY PARKS DIVISION
CITY OF MADISON
MADISON, DANE COUNTY, WISCONSIN**


Eric Knepp, Parks Superintendent

EMK: SCL

SECTION A: ADVERTISEMENT FOR BIDS AND INSTRUCTIONS TO BIDDERS

REQUEST FOR BID FOR PUBLIC WORKS CONSTRUCTION CITY OF MADISON, WISCONSIN

A BEST VALUE CONTRACTING MUNICIPALITY

PROJECT NAME:	2017 PARK PLAYGROUND IMPROVEMENTS - GROUP 3
CONTRACT NO.:	7929
SBE GOAL	4%
BID BOND	5%
PRE BID MEETING (1:00 P.M.)	5/12/2017
PREQUALIFICATION APPLICATION DUE (1:00 P.M)	5/12/2017
BID SUBMISSION (1:00 P.M.)	5/19/2017
BID OPEN (1:30 P.M.)	5/19/2017
PUBLISHED IN WSJ	4/28/2017, 5/5/2017 & 5/12/2017

PRE BID MEETING: Representatives of the Affirmative Action Department will be present to discuss the Small Business Enterprise requirements at 1600 Emil Street, Madison Wisconsin.

PREQUALIFICATION APPLICATION: Forms are available on our website, www.cityofmadison.com/business/pw/forms.cfm. If not currently prequalified in the categories listed in Section A, an amendment to your Prequalification will need to be submitted prior to the same due date. Postmark is not applicable.

BIDS TO BE SUBMITTED by hand to 1600 EMIL ST., MADISON, WI 53713 or online at www.bidexpress.com.

THE BID OPENING is at 1600 EMIL ST., MADISON, WI 53713.

STANDARD SPECIFICATIONS

The City of Madison's Standard Specifications for Public Works Construction - 2017 Edition, as supplemented and amended from time to time, forms a part of these contract documents as if attached hereto.

These standard specifications are available on the City of Madison Public Works website, www.cityofmadison.com/Business/PW/specs.cfm.

The Contractor shall review these Specifications prior to preparation of proposals for the work to be done under this contract, with specific attention to Article 102, "BIDDING REQUIREMENTS AND CONDITIONS" and Article 103, "AWARD AND EXECUTION OF THE CONTRACT." For the convenience of the bidder, below are highlights of three subsections of the specifications.

SECTION 102.1: PRE-QUALIFICATION OF BIDDERS

In accordance with Wisconsin State Statutes 66.0901 (2) and (3), all bidders must submit to the Board of Public Works proof of responsibility on forms furnished by the City. The City requires that all bidders be qualified on a biennial basis.

Bidders must present satisfactory evidence that they have been regularly engaged in the type of work specified herein and they are fully prepared with necessary capital, materials, machinery and supervisory personnel to conduct the work to be contracted for to the satisfaction of the City. All bidders must be pre-qualified by the Board of Public Works for the type of construction on which they are bidding prior to the opening of the bid.

In accordance with Section 39.02(9)(a)l. of the General Ordinances, all bidders shall submit in writing to the Affirmative Action Division Manager of the City of Madison, a Certificate of Compliance or an Affirmative Action Plan at the same time or prior to the submission of the proof of responsibility forms.

The bidder shall be disqualified if the bidder fails to or refuses to, prior to opening of the bid, submit a Certificate of compliance, Affirmative Action Plan or Affirmative Action Data Update, as applicable, as defined by Section 39.02 of the General Ordinances (entitled Affirmative Action) and as required by Section 102.11 of the Standard Specifications.

SECTION 102.4 PROPOSAL

No bid will be accepted that does not contain an adequate or reasonable price for each and every item named in the Schedule of Unit Prices.

A lump sum bid for the work in accordance with the plans and specifications is required. The lump sum bid must be the same as the total amounts bid for the various items and it shall be inserted in the space provided.

All papers bound with or attached to the proposal form are considered a part thereof and must not be detached or altered when the proposal is submitted. The plans, specifications and other documents designated in the proposal form will be considered a part of the proposal whether attached or not.

A proposal submitted by an individual shall be signed by the bidder or by a duly authorized agent. A proposal submitted by a partnership shall be signed by a member/partner or by a duly authorized agent thereof. A proposal submitted by a corporation shall be signed by an authorized officer or duly authorized registered agent of such corporation, and the proposal shall show the name of the State under the laws of which such corporation was chartered. The required signatures shall in all cases appear in the space provided thereof on the proposal.

Each proposal shall be placed, together with the proposal guaranty, in a sealed envelope, so marked as to indicate name of project, the contract number or option to which it applies, and the name and address of the Contractor or submitted electronically through Bid Express (www.bidexpress.com). Proposals will be accepted at the location, the time and the date designated in the advertisement. Proposals received after the time and date designated will be returned to the bidder unopened.

SECTION 102.5: BID DEPOSIT (PROPOSAL GUARANTY)

All bids, sealed or electronic, must be accompanied with a Bid Bond equal to at least 5% of the bid or a Certificate of Annual/Biennial Bid Bond or certified check, payable to the City Treasurer. Bid deposit of the successful bidders shall be returned within forty-eight (48) hours following execution of the contract and bond as required.

MINOR DISCREPENCIES

Bidder is responsible for submitting all forms necessary for the City to determine compliance with State and City bidding requirements. Notwithstanding any language to the contrary contained herein, the City may exercise its discretion to allow bidders to correct or supplement submissions after bid opening, if the minor discrepancy, bid irregularity or omission is insignificant and not one related to price, quality, quantity, time of completion or performance of the contract.

Bidders for this Contract(s) must be Pre-Qualified for at least one of the following type(s) of construction denoted by an

Building Demolition

- 101 Asbestos Removal
- 120 House Mover

- 110 Building Demolition

Street, Utility and Site Construction

- 201 Asphalt Paving
- 205 Blasting
- 210 Boring/Pipe Jacking
- 215 Concrete Paving
- 220 Con. Sidewalk/Curb & Gutter/Misc. Flat Work
- 221 Concrete Bases and Other Concrete Work
- 222 Concrete Removal
- 225 Dredging
- 230 Fencing
- 235 Fiber Optic Cable/Conduit Installation
- 240 Grading and Earthwork
- 241 Horizontal Saw Cutting of Sidewalk
- 242 Infrared Seamless Patching
- 245 Landscaping, Maintenance
- 246 Ecological Restoration
- 250 Landscaping, Site and Street
- 251 Parking Ramp Maintenance
- 252 Pavement Marking
- 255 Pavement Sealcoating and Crack Sealing
- 260 Petroleum Above/Below Ground Storage Tank Removal/Installation
- 262 Playground Installer

- 265 Retaining Walls, Precast Modular Units
- 270 Retaining Walls, Reinforced Concrete
- 275 Sanitary, Storm Sewer and Water Main Construction
- 276 Sawcutting
- 280 Sewer Lateral Drain Cleaning/Internal TV Insp.
- 285 Sewer Lining
- 290 Sewer Pipe Bursting
- 295 Soil Borings
- 300 Soil Nailing
- 305 Storm & Sanitary Sewer Laterals & Water Svc.
- 310 Street Construction
- 315 Street Lighting
- 318 Tennis Court Resurfacing
- 320 Traffic Signals
- 325 Traffic Signing & Marking
- 332 Tree pruning/removal
- 333 Tree, pesticide treatment of
- 335 Trucking
- 340 Utility Transmission Lines including Natural Gas, Electrical & Communications
- 399 Other _____

Bridge Construction

- 501 Bridge Construction and/or Repair

Building Construction

- 401 Floor Covering (including carpet, ceramic tile installation, rubber, VCT)
- 402 Building Automation Systems
- 403 Concrete
- 404 Doors and Windows
- 405 Electrical - Power, Lighting & Communications
- 410 Elevator - Lifts
- 412 Fire Suppression
- 413 Furnishings - Furniture and Window Treatments
- 415 General Building Construction, Equal or Less than \$250,000
- 420 General Building Construction, \$250,000 to \$1,500,000
- 425 General Building Construction, Over \$1,500,000
- 428 Glass and/or Glazing
- 429 Hazardous Material Removal
- 430 Heating, Ventilating and Air Conditioning (HVAC)
- 433 Insulation - Thermal
- 435 Masonry/Tuck pointing

- 437 Metals
- 440 Painting and Wallcovering
- 445 Plumbing
- 450 Pump Repair
- 455 Pump Systems
- 460 Roofing and Moisture Protection
- 464 Tower Crane Operator
- 461 Solar Photovoltaic/Hot Water Systems
- 465 Soil/Groundwater Remediation
- 466 Warning Sirens
- 470 Water Supply Elevated Tanks
- 475 Water Supply Wells
- 480 Wood, Plastics & Composites - Structural & Architectural
- 499 Other _____

State of Wisconsin Certifications

- 1 Class 5 Blaster - Blasting Operations and Activities 2500 feet and closer to inhabited buildings for quarries, open pits and road cuts.
- 2 Class 6 Blaster - Blasting Operations and Activities 2500 feet and closer to inhabited buildings for trenches, site excavations, basements, underwater demolition, underground excavations, or structures 15 feet or less in height.
- 3 Class 7 Blaster - Blasting Operations and Activities for structures greater than 15 ' in height, bridges, towers, and any of the objects or purposes listed as "Class 5 Blaster or Class 6 Blaster".
- 4 Petroleum Above/Below Ground Storage Tank Removal and Installation (Attach copies of State Certifications.)
- 5 Hazardous Material Removal (Contractor to be certified for asbestos and lead abatement per the Wisconsin Department of Health Services, Asbestos and Lead Section (A&LS).) See the following link for application: www.dhs.wisconsin.gov/Asbestos/Cert. State of Wisconsin Performance of Asbestos Abatement Certificate must be attached.
- 6 Certification number as a Certified Arborist or Certified Tree Worker as administered by the International Society of Arboriculture
- 7 Pesticide application (Certification for Commercial Applicator For Hire with the certification in the category of turf and landscape (3.0) and possess a current license issued by the DATCP)
- 8 State of Wisconsin Master Plumbers License.

SECTION B: PROPOSAL

Please refer to the
Bid Express Website
at <https://bidexpress.com>
look up contract number
and go to
Section B: Proposal Page

You can access all City of Madison bid solicitations for FREE at www.bidexpress.com

Click on the “Register for Free” button and follow the instructions to register your company and yourself. You will be asked for a payment subscription preference, since you may wish to bid online someday. Simply choose the method to pay on a ‘per bid’ basis. This requires no payment until / unless you actually bid online. You can also choose the monthly subscription plan at this time. You will, however, be asked to provide payment information. Remember, you can change your preference at anytime. You will then be able to complete your free registration and have full access to the site. Your free access does not require completion of the ‘Digital ID’ process, so you will have instant access for viewing and downloading. To be prepared in case you ever do wish to bid online, you may wish to establish your digital ID also, since you cannot bid without a Digital ID.

If you have any problems with the free registration process, you can call the bidexpress help team, toll free at 1-888-352-2439 (option 1, option1).

SECTION C: SMALL BUSINESS ENTERPRISE

Instructions to Bidders City of Madison SBE Program Information

2 Small Business Enterprise (SBE) Program Information

2.1 Policy and Goal

The City of Madison reaffirms its policy of nondiscrimination in the conduct of City business by maintaining a procurement process which remains open to all who have the potential and ability to sell goods and services to the City. It is the policy of the City of Madison to allow Small Business Enterprises (SBE) maximum feasible opportunity to participate in City of Madison contracting. The bidder acknowledges that its bid has been submitted in accordance with the SBE program and is for the public's protection and welfare.

Please refer to the "ADVERTISEMENT FOR BIDS" for the goal for the utilization of SBEs on this project. SBEs may participate as subcontractors, vendors and/or suppliers, which provide a commercially useful function. The dollar value for SBE suppliers or 'materials only' vendors shall be discounted to 60% for purposes of meeting SBE goals.

A bidder which achieves or exceeds the SBE goal will be in compliance with the SBE requirements of this project. In the event that the bidder is unable to achieve the SBE goal, the bidder must demonstrate that a good faith effort to do so was made. Failure to either achieve the goal or demonstrate a good faith effort to do so will be grounds for the bidder being deemed a non-responsible contractor ineligible for award of this contract.

A bidder may count towards its attainment of the SBE goal only those expenditures to SBEs that perform a commercially useful function. For purposes of evaluating a bidder's responsiveness to the attainment of the SBE goal, the contract participation by an SBE is based on the percentage of the total base bid proposed by the Contractor. The total base bid price is inclusive of all addenda.

Work performed by an SBE firm in a particular transaction can be counted toward the goal only if it involves a commercially useful function. That is, in light of industry practices and other relevant considerations, does the SBE firm have a necessary and useful role in the transaction, of a kind for which there is a market outside the context of the SBE Program, or is the firm's role a superfluous step added in an attempt to obtain credit towards goals? If, in the judgment of the Affirmative Action Division, the SBE firm will not perform a commercially useful function in the transaction, no credit towards goals will be awarded.

The question of whether a firm is performing a commercially useful function is completely separate from the question of whether the firm is an eligible SBE. A firm is eligible if it meets the definitional criteria and ownership and control requirements, as set forth in the City of Madison's SBE Program.

If the City of Madison determines that the SBE firm is performing a commercially useful function, then the City of Madison must then decide what that function is. If the commercially useful function is that of an SBE vendor / supplier that regularly transacts business with the respective product, then the City of Madison will count 60% of the value of the product supplied toward SBE goals.

To be counted, the SBE vendor / supplier must be engaged in selling the product in question to the public. This is important in distinguishing an SBE vendor / supplier, which has a regular trade with a variety of customers, from a firm which performs supplier-like functions on an ad hoc basis or for only one or two contractors with whom it has a special relationship.

A supplier of bulk goods may qualify as an eligible SBE vendor / supplier if it either maintains an inventory or owns or operates distribution equipment. With respect to the distribution equipment; e.g., a fleet of trucks, the term "operates" is intended to cover a situation in which the supplier leases the equipment on a regular basis for its entire business. It is not intended to cover a situation in which the firm simply provides drivers for trucks owned or leased by another party; e.g., a prime contractor, or leases such a party's trucks on an ad hoc basis for a specific job.

If the commercially useful function being performed is not that of a qualified SBE vendor / supplier, but rather that of delivery of products, obtaining bonding or insurance, procurement of personnel, acting as a broker or manufacturer's representative in the procurement of supplies, facilities, or materials, etc., only the fees or commissions will apply towards the goal.

For example, a business that simply transfers title of a product from manufacturer to ultimate purchaser; e. g., a sales representative who re-invoices a steel product from the steel company to the Contractor, or a firm that puts a product into a container for delivery would not be considered a qualified SBE vendor / supplier. The Contractor would not receive credit based on a percentage of the cost of the product for working with such firms.

Concerning the use of services that help the Contractor obtain needed supplies, personnel, materials or equipment to perform a contract: only the fee received by the service provider will be counted toward the goal. For example, use of a SBE sales representative or distributor for a steel company, if performing a commercially useful function at all, would entitle the Contractor receiving the steel to count only the fee paid to the representative or distributor toward the goal. This provision would also govern fees for professional and other services obtained expressly and solely to perform work relating to a specific contract.

Concerning transportation or delivery services: if an SBE trucking company picks up a product from a manufacturer or a qualified vendor / supplier and delivers the product to the Contractor, the commercially useful function it is performing is not that of a supplier, but simply that of a transporter of goods. Unless the trucking company is itself the manufacturer or a qualified vendor / supplier in the product, credit cannot be given based on a percentage of the cost of the product. Rather, credit would be allowed for the cost of the transportation service.

The City is aware that the rule's language does not explicitly mention every kind of business that may contribute work on this project. In administering these programs, the City would, on a case-by-case basis, determine the appropriate counting formula to apply in a particular situation.

2.2 Contract Compliance

Questions concerning the SBE Program shall be directed to the Contract Compliance Officer of the City of Madison Department of Civil Rights, Affirmative Action Division, 210 Martin Luther King, Jr. Blvd., Room 523, Madison, WI 53703; telephone (608) 266-4910.

2.3 Certification of SBE by City of Madison

The Affirmative Action Division maintains a directory of SBEs which are currently certified as such by the City of Madison. Contact the Contract Compliance Officer as indicated in Section 2.2 to receive a copy of the SBE Directory or you may access the SBE Directory online at www.cityofmadison.com/dcr/aaTBDir.cfm.

All contractors, subcontractors, vendors and suppliers seeking SBE status must complete and submit the **Targeted Business Certification Application** to the City of Madison Affirmative Action Division by the time and date established for receipt of bids. A copy of the Targeted Business Certification Application is available by contacting the Contract Compliance Officer at the address and telephone indicated in Section 2.2 or you may access the Targeted Business Certification Application online at www.cityofmadison.com/dcr/aaTBDir.cfm. Submittal of the Targeted Business Certification Application by the time specified does not guarantee that the applicant will be certified as a SBE eligible to be utilized towards meeting the SBE goal for this project.

2.4 Small Business Enterprise Compliance Report

2.4.1 Good Faith Efforts

Bidders shall take all necessary affirmative steps to assure that SBEs are utilized when possible and that the established SBE goal for this project is achieved. A contractor who self performs a portion of the work, and is pre-qualified to perform that category of work, may subcontract that portion of the work, but shall not be required to do so. When a bidder is unable to achieve the established SBE goal, the bidder must demonstrate that a good faith effort to do so was made. Such a good faith effort should include the following:

- 2.4.1.1 Attendance at the pre-bid meeting.
- 2.4.1.2 Using the City of Madison's directory of certified SBEs to identify SBEs from which to solicit bids.
- 2.4.1.3 Assuring that SBEs are solicited whenever they are potential sources.
- 2.4.1.4 Referring prospective SBEs to the City of Madison Affirmative Action Division for certification.
- 2.4.1.5 Dividing total project requirements into smaller tasks and/or quantities, where economically feasible, to permit maximum feasible SBE participation.
- 2.4.1.6 Establishing delivery schedules, where requirements permit, which will encourage participation by SBEs.
- 2.4.1.7 Providing SBEs with specific information regarding the work to be performed.
- 2.4.1.8 Contacting SBEs in advance of the deadline to allow such businesses sufficient time to prepare a bid.
- 2.4.1.9 Utilizing the bid of a qualified and competent SBE when the bid of such a business is deemed reasonable (i.e. 5% above the lowest bidder), although not necessarily low.
- 2.4.1.10 Contacting SBEs which submit a bid, to inquire about the details of the bid and confirm that the scope of the work was interpreted as intended.
- 2.4.1.11 Completion of Cover Page (page C-6), Summary Sheet (page C-7) and SBE Contact Reports (pages C-8 and C9) if applicable.

2.4.2 Reporting SBE Utilization and Good Faith Efforts

The Small Business Enterprise Compliance Report is to be submitted by the bidder with the bid: This report is due by the specified bid closing time and date. Bids submitted without a completed SBE Compliance Report as outlined below may be deemed non-responsible and the bidder ineligible for award of this contract. Notwithstanding any language to the contrary contained herein, the City may exercise its discretion to allow bidders to correct or supplement submissions after bid opening, if the minor discrepancy, bid irregularity or omission is insignificant and not one related to price, quality, quantity, time of completion, performance of the contract, or percentage of SBE utilization.

2.4.2.1 If the Bidder meets or exceeds the goal established for SBE utilization, the Small Business Enterprise Compliance Report shall consist of the following:

- 2.4.2.1.1 **Cover Page**, Page C-6; and
- 2.4.2.1.2 **Summary Sheet**, C-7.

2.4.2.2 If the bidder does not meet the goal established for SBE utilization, the Small Business Enterprise Compliance Report shall consist of the following:

- 2.4.2.2.1 **Cover Page**, Page C-6;
- 2.4.2.2.2 **Summary Sheet**, C-7; and
- 2.4.2.2.3 **SBE Contact Report**, C-8 and C-9. (A separate Contact Report must be completed for each applicable SBE which is not utilized.)

2.5 Appeal Procedure

A bidder which does not achieve the established goal and is found non-responsible for failure to demonstrate a good faith effort to achieve such goal and subsequently denied eligibility for award of contract may appeal that decision to the Small Business Enterprises Appeals Committee. All appeals shall be made in writing, and shall be delivered to and received by the City Engineer no later than 4:30 PM on the third business day following the bidder's receipt of the written notification of ineligibility by the Affirmative Action Division Manager. Postmark not acceptable. The notice of appeal shall state the basis for the appeal of the decision of the Affirmative Action Division Manager. The Appeal shall take place in accordance with Madison General Ordinance 33.54.

2.6 SBE Requirements After Award of the Contract

The successful bidder shall identify SBE subcontractors, suppliers and vendors on the subcontractor list in accordance with the specifications. The Contractor shall submit a detailed explanation of any variances between the listing of SBE subcontractors, vendors and/or suppliers on the subcontractor list and the Contractor's SBE Compliance Report for SBE participation.

No change in SBE subcontractors, vendors and/or suppliers from those SBEs indicated in the SBE Compliance Report will be allowed without prior approval from the Engineer and the Affirmative Action Division. The contractor shall submit in writing to the City of Madison Affirmative Action Division a request to change any SBE citing specific reasons which necessitate such a change. The Affirmative Action Division will use a general test of reasonableness in approving or rejecting the contractor's request for change. If the request is approved, the Contractor will make every effort to utilize another SBE if available.

The City will monitor the project to ensure that the actual percentage commitment to SBE firms is carried out.

2.7 SBE Definition and Eligibility Guidelines

A Small Business Enterprise is a business concern awarded certification by the City of Madison. For the purposes of this program a Small Business Enterprise is defined as:

- A. An independent business operated under a single management. The business may not be a subsidiary of any other business and the stock or ownership may not be held by any individual or any business operating in the same or a similar field. In determining whether an entity qualifies as a SBE, the City shall consider all factors relevant to being an independent business including, but not limited to, the date the business was established, adequacy of its resources for the work in which it proposes to involve itself, the degree to which financial, equipment leasing and other relationships exist with other ineligible firms in the same or similar lines of work. SBE owner(s) shall enjoy the customary incidents of ownership and shall share in the risks and profits commensurate with their enjoyment interests, as demonstrated by an examination of the substance rather than form or arrangements that may be reflected in its ownership documents.
- B. A business that has averaged no more than \$4.0 million in annual gross receipts over the prior three year period and the principal owner(s) do not have a personal net worth in excess of \$1.32 million.

Firm and/or individuals that submit fraudulent documents/testimony may be barred from doing business with the City and/or forfeit existing contracts.

SBE certification is valid for one (1) year unless revoked.

**2017 PARK PLAYGROUND IMPROVEMENTS - GROUP 3
CONTRACT NO. 7929**

Small Business Enterprise Compliance Report

**This information may be submitted electronically through
Bid Express or submitted with bid in sealed envelope.**

Cover Sheet

Prime Bidder Information

Company: _____

Address: _____

Telephone Number: _____ Fax Number: _____

Contact Person/Title: _____

Prime Bidder Certification

I, _____, _____ of
Name Title

_____ certify that the information
Company

contained in this SBE Compliance Report is true and correct to the best of my knowledge and belief.

Witness' Signature

Bidder's Signature

Date

**2017 PARK PLAYGROUND IMPROVEMENTS - GROUP 3
CONTRACT NO. 7929**

Small Business Enterprise Compliance Report

Summary Sheet

SBE Subcontractors Who Are NOT Suppliers

Name(s) of SBEs Utilized	Type of Work	% of Total Bid Amount
		%
		%
		%
		%
		%
		%
		%
		%
		%
		%
		%
		%
		%
		%
		%
Subtotal SBE who are NOT suppliers:		_____ %

SBE Subcontractors Who Are Suppliers

Name(s) of SBEs Utilized	Type of Work	% of Total Bid Amount
		%
		%
		%
		%
		%
		%
		%
Subtotal Contractors who are suppliers: _____ % x 0.6 = _____		% (discounted to 60%)
Total Percentage of SBE Utilization: _____ %.		

**2017 PARK PLAYGROUND IMPROVEMENTS - GROUP 3
CONTRACT NO. 7929**

Small Business Enterprise Compliance Report

SBE Contact Report

Submit separate copy of this form for each SBE which you are not able to utilize towards meeting the SBE goal for this project. Attach separate sheets if necessary.

SBE Information

Company: _____

Address: _____

Telephone Number: _____

Contact Person/Title: _____

1. Outline below all efforts to solicit a bid from the above SBE. Include date, means of contact, who from your company made this contact and the result.

2. Describe the information provided to the aforementioned SBE regarding the scope of work for which he/she was to provide a bid.

Is this the same scope of work on which the subcontractor you intend to utilize based his/her bid?

Yes No

3. Did this SBE submit a bid? Yes No

4. Is the General Contractor pre-qualified to self-perform this category of work?

Yes No

5. If you responded "Yes" to Question 3, please check the items below which apply and provide the requested detail. If you responded "No" to Question 3, please skip ahead to item 6 below.

The SBE listed above is unavailable for work on this project for the following reasons. Provide specific detail for this conclusion.

The SBE listed above is unqualified for work on this project. Provide specific details for this conclusion.

The SBE listed above provided a price that was unreasonable (i.e. more than 5% above the lowest bidder). Provide specific detail for this conclusion including the SBE's price and the price of the subcontractor you intend to utilize.

A contract with the SBE listed above may constitute a breach of the bidder's collective bargaining agreements. Provide specific detail for this conclusion including, but not limited to, correspondence from the SBE indicating it will not sign a project labor agreement and/or correspondence from the applicable trade union indicating a project labor agreement will not be allowed at the time of project bidding.

Other; please specify reason(s) other than listed above which made it impossible for you to utilize this SBE on this project.

6. Describe any other good faith efforts:

SECTION D: SPECIAL PROVISIONS

2017 PARK PLAYGROUND IMPROVEMENTS - GROUP 3 CONTRACT NO. 7929

It is the intent of these Special Provisions to set forth the final contractual intent as to the matter involved and shall prevail over the Standard Specifications and plans whenever in conflict therewith. In order that comparisons between the Special Provisions can be readily made, the numbering system for the Special Provisions is equivalent to that of the Specifications.

Whenever in these Specifications the term "Standard Specifications" appears, it shall be taken to refer to the City of Madison Standard Specifications for Public Works Construction and Supplements thereto.

SECTION 102.12: BEST VALUE CONTRACTING

This Contract shall be considered a Best Value Contract if the Contractor's bid is equal to or greater than \$59,000 for a single trade contract; or equal to or greater than \$288,000 for a multi-trade contract pursuant to MGO 33.07(7).

SECTION 104: SCOPE OF WORK

This project consists of installation of new playground equipment and associated site and playground amenities, underdrain, and asphalt paths at various City of Madison parks locations.

The Contractor shall view the sites prior to bidding to become familiar with the existing conditions. The Contractor shall work with the existing utilities to resolve conflicts during the construction process.

SECTION 105.1: AUTHORITY OF THE ENGINEER

The Engineer shall resolve all questions which arise as to the quality and acceptability of materials furnished, work performed, manner of performance, rate of progress of the work, interpretation of the plans and Specifications, acceptable fulfillment of the contract, compensation, and disputes and mutual rights between Contractors under the Specifications. The Engineer shall determine the amount and quantity of work performed and materials furnished.

All decisions of the Engineer shall, when so requested, be rendered in writing. They shall be final and conclusive in all matters unless within ten (10) days after such decision the Contractor applies in writing to the Board of Public Works for a review of such decision.

Any change proposed by a Contractor in SBE subcontractors, vendors or suppliers from those SBEs indicated on the SBE Compliance Report must be approved by the Engineer and the City's Manager of the Affirmative Action Division (hereafter, AAD). When requested, such decision shall be rendered in writing. Such decisions shall be final and conclusive in all matters unless within ten (10) days after such decision the Contractor or the affected SBE applies in writing to the Board of Public Works for a review of such decision.

In the event the Engineer and the AAD disagree over the proper decision to be made regarding an SBE, the Mayor shall appoint a third person to resolve the disagreement, within 30 days of appointment. The decision thus rendered may be reviewed by the Board of Public Works upon request of the Contractor or the affected SBE as set forth in Sections 105.1 and 105.2 of the City's standard specifications.

SECTION 105.9: SURVEYS, POINTS, AND INSTRUCTION

The Contractor is responsible for the layout of the playground underdrain system per Bid Item 20130. The City of Madison shall be responsible for setting all other lines and/or grades required to complete the work for the 2017 Park Playground Improvements – Group 3. Any questions regarding the layout and staking of this project should be directed to City of Madison Parks Surveyor Dan Rodman at 658-3087.

SECTION 105.12: COOPERATION BY CONTRACTOR

The Contractor shall be required to contact the City of Madison Playground Construction Inspector to remove existing play equipment least 7 business days in advance of starting construction.

Several utilities exist on site. The Contractor shall perform a One Call through Digger's Hotline for each site at least three days prior to beginning construction. To ensure that Parks-owned utilities are also marked, include the PARK NAME AT THE BEGINNING OF THE MARKING instructions field on the ticket, and send a copy of the ticket to the City of Madison Parks Surveyor (Dan Rodman / drodman@cityofmadison.com / tel (608) 658-3087 / fax (608)267-1162).

The Contractor shall secure materials at the end of each work day to deter any potential vandalism and theft.

The Contractor shall attend a pre-construction meeting prior to the start of construction.

The Contractor warrants that its services are performed, within the limits prescribed by the City, with the usual thoroughness and competence of the consulting profession; in accordance with the standard for professional services at the time those services are rendered. The Contractor shall be responsible for the accuracy of the work performed under this Agreement, and shall promptly make necessary revisions or corrections resulting from their negligent acts, errors or omissions without additional compensation. The Contractor shall be responsible for any damages incurred as a result of their errors, omissions, or negligent acts and for any losses or costs to repair or remedy construction.

The Contractor shall take care when accessing the site not to damage the existing utilities, concrete curb, sidewalk or asphalt pavement. Any damage shall be repaired by the Contractor per the Standard Specifications and considered incidental to this contract.

The Contractor shall contact the Playground Construction Inspector (Andy Peters at (608) 220-6501) each day to inform the Playground Construction Inspector the location of the day's proposed playground construction.

SECTION 105.13: ORDER OF COMPLETION

Prior to beginning construction, the Contractor shall submit to the City a detailed schedule at or prior to the preconstruction meeting showing the sequence and anticipated dates of all playground installation operations.

Construction of playgrounds may run concurrently, no site shall be open for more than 3 weeks, excluding final pavement placement.

Tenney Park and Lake Park playground shall begin construction after August 1, 2017.

SECTION 107.13: TREE PROTECTION SPECIFICATIONS

The Contractor is advised to review Article 107.13 of the Standard Specifications for tree protection. Note that Articles 107.13(b) Curb Excavation and Installation, and 107.13(c) Sidewalk Excavation and Installation are not applicable to this project except as noted below.

The intent of these designs is to minimize the damage to those trees that remain following construction. Trees that must be protected are designated on the plans. It is recognized that grading operations and root cutting of some trees will need to occur within 5 feet of trees in order to complete the work, and care must be taken in these areas. For trees where construction operations, including grading, stone placement, filling, etc. occur within 5 feet of the trunk, construction operations near these trees shall be

done under the supervision of a City of Madison Forestry Representative. The sequence to construct in these areas shall be as follows:

Roots shall be cut cleanly by using a saw, ax, lopping shears, chain saw, stump grinder, or other means which will produce a clean cut. Exposed roots shall be covered as soon as excavation and installation are complete. All roots over one (1) inch in diameter that are damaged shall be cleanly cut immediately back of the damaged section on the same day of the excavation. The Contractor shall not rip or pull roots out towards the trunk of a tree while excavating with a backhoe. The use of a backhoe to cut roots is NOT acceptable.

All provisions of Articles 107.13(d), 107.13(f) Bark Abrasions and Limb Damage, 107.13(g) Soil Compaction, 107.13(h) Contractor/Foreperson Acknowledgement, and 107.13(i) Cost Recovery and Liquidated Damages are applicable to this contract.

Protection of these trees shall be paid under Bid Item 10803 – ROOT CUTTING.

SECTION 108.2: PERMITS

The following permits have been applied for by the City of Madison for each applicable playground site:

1. City of Madison Erosion Control Permit
2. Wisconsin Department of Natural Resources Type I Dewatering Permit

The Contractor shall meet the conditions of all permits and must keep a copy of each individual permit on site at all times throughout construction.

The Contractor shall note that street sweeping shall be incidental to this contract and will not be paid as a separate bid item. The Contractor is responsible for cleaning any material tracked into street.

The Contractor shall meet the conditions of the permits including properly installing and maintaining the erosion control measures shown on the plans, specified in these special provisions, or as directed by the Engineer or his designees.

The City's obtaining these permits is not intended to be exhaustive of all permits that may be required to be obtained by the Contractor for construction of this project. It shall be the responsibility of the Contractor to identify and obtain any other permits needed for construction.

SECTION 109.2: PROSECUTION OF THE WORK

Work cannot start on this contract until after the "Start to Work" letter has been received. Construction work must begin within seven (7) calendar days after the date appearing on the mailed notice to do so that was sent to the Contractor. Construction work shall be carried at a rate so as to secure full completion within the contract times outlined in Section 109.7, the rate of progress and the time of completion being essential conditions of this Agreement. Definite notice of intention to start work shall be given to the Engineer at least seventy-two (72) hours in advance of beginning work.

The fixed, agreed upon, liquidated damages for failure to complete all work within the contract, unless otherwise specified in this section, shall be calculated in accordance with Article 109 of the Standard Specifications. The Contractor shall limit workdays from 7:00 am to 7:00 pm, Monday - Friday, unless approved by the Engineer in writing.

ARTICLE 109.5: METHODS AND EQUIPMENT

At Tenney Park, due to the poor soil conditions the Contractor will be expected to use small or low-earth pressure equipment. Vehicular access to the island shall be limited to the Thornton Avenue bridge. The Thornton Avenue bridge is 10' wide and can only accommodate 28,000 lbs occasional loadings for two-

axle truck, the weight limit may be increased with additional axels on a vehicle. The bridge can accommodate any number of loadings of 20,000 from a two-axle truck.

Any damage to the existing bridge due to use outside of approved equipment, shall be the responsibility of the Contractor to repair as deemed satisfactory by the Engineer. Prior to construction, the Contractor shall identify the make and model of construction vehicles used, their weight, the full load weight with materials, and the planned haul routes for construction.

SECTION 109.7: TIME OF COMPLETION

The Contractor shall begin work on the 2017 Park Playground Improvements – Group 3 on or before July 17, 2017 and shall be completed by October 31, 2017.

SECTION 110.1: MEASUREMENT OF QUANTITIES

All bid items listed in the proposal page will be paid for at the quantity listed in the proposal page, and will not be measured in the field unless otherwise indicated in these special provisions, or there is a significant change approved by the Engineer.

BID ITEM 10803 - ROOT CUTTING

DESCRIPTION

Work under this item shall include all costs associated root cutting as described in special provision Section 107.13 Tree Protection Specifications.

METHOD OF MEASUREMENT

Root Cutting shall be measured per each individual tree marked NRC on the plan.

BASIS OF PAYMENT

Root Cutting shall be measured as described above and shall be paid for at the contract price which shall be full compensation for all work, materials, tools, equipment, labor, and incidentals required to complete the work as set forth in the description.

BID ITEM 10911 - MOBILIZATION

DESCRIPTION

Work under this item shall include all costs associated with mobilization of the Contractor to each playground location. Parking of equipment, storage of materials, and staging shall be allowed within project limits as shown on plans. The Contractor may only enter the construction site through the construction entrance as shown on the plans. THE CONTRACTOR MAY NOT DRIVE OR STORE EQUIPMENT ON ANY PORTION OF THE PARK OUTSIDE THE CONSTRUCTION LIMITS UNLESS INDICATED OTHERWISE ON PLANS OR DIRECTED IN THE FIELD.

The Contractor is responsible for restoration of any damage to the site due to construction access.

METHOD OF MEASUREMENT

Mobilization shall be paid as a lump sum for mobilization related to each project site.

BASIS OF PAYMENT

Mobilization shall be measured as described above and shall be paid for at the contract price which shall be full compensation for all work, materials, tools, equipment, labor, and incidentals required to complete the work as set forth in the description.

BID ITEM 20101 – EXCAVATION CUT

DESCRIPTION

Excavation Cut shall consist of the loosening, loading, hauling and disposal of all materials, except the existing pea gravel playground surfacing which shall be paid for under BID ITEM 20103 - EXCAVATION CUT – PEA GRAVEL. Excavation cut shall be in accordance with Article 201 of the Standard Specifications.

The excavation quantities for this contract have been calculated by subtracting digital terrain models of the existing and proposed surfaces and sub surfaces within the different material areas. Cut (in place quantities) and fill have been estimated from these models. Cut and fill quantities have been determined based on an estimated existing playground surface depth of 17". No shrinkage factor has been applied to fill quantities to estimate net volume. The Contractor is responsible to review attached earthwork calculations. Three-dimensional Microstation (.dgn) files containing the digital terrain models used for the earthwork calculations are available.

The proposal quantity was computed by Microstation InRoads surface data volume computations and the assumptions listed above. Adjustments were made for topsoil assuming excavation of six (6) inches of existing topsoil, placement of six (6) inches of proposed topsoil, and placement of twelve (12) inches of playground surfacing (depending on the surfacing type).

Excess excavated material deemed unusable shall be disposed of at a suitable location determined by the Contractor at no additional cost to the City of Madison.

Suitable materials (to be determined by the Engineer) may be reused as fill within the project limits. Placement of these fill materials shall be considered incidental to this bid item and shall not be compensated separately. All double handling and subsoil placement is included in this bid item.

Any additional undercut required due to field conditions shall be paid for at the Excavation Cut unit bid price.

Test rolling for undercut determination is required at all playground sites and is incidental to this bid item.

Final playground subgrade must be within +/- 1". The Contractor shall contact the Engineer to proof subgrade prior to installation of fabric over playground subgrade.

Contractor to note all excavated areas shall be filled at the end of each work day. No excavated areas shall be "open" during non-work hours.

METHOD OF MEASUREMENT

Excavation Cut shall be measured by the cubic yard quantity as listed in the proposal page without measurement thereof.

BASIS OF PAYMENT

Excavation Cut shall be measured as described above and shall be paid for at the contract unit price which shall be full compensation for all work, materials, labor, tools, equipment, disposal, and incidentals required to complete the work as set forth in the description.

BID ITEM 20103 – EXCAVATION CUT - PEA GRAVEL

DESCRIPTION

Excavation Cut – Pea Gravel shall consist of the loosening, loading, hauling and disposal of the existing pea gravel playground surfacing as identified on the plans per Article 201 of the Standard Specifications. The excavation quantities for this contract have been calculated by subtracting digital terrain models of the existing and proposed surfaces and sub surfaces within the different material areas. Cut (in place quantities) and fill have been estimated from these models. Cut and fill quantities have been determined based on an estimated existing playground surface depth of 17". No shrinkage factor has been applied to fill quantities to estimate net volume. The Contractor is responsible to review attached earthwork calculations. Three-dimensional Microstation (.dgn) files containing the digital terrain models used for the earthwork calculations are available.

The proposal quantity was computed by Microstation InRoads surface data volume computations and the assumptions listed above. Adjustments were made for excavation of seventeen (17) inches of existing playground surfacing.

Excess material shall be disposed offsite at a location to be determined and provided by the City at no extra cost to the City. Double handling and stockpiling pea gravel is included in this bid item. Contractor to note all excavated areas shall be filled at the end of each work day. No excavated areas shall be "open" during non-work hours.

METHOD OF MEASUREMENT

Excavation Cut – Pea Gravel within the limits shown on the plans shall be measured by the cubic yard quantity as listed in the proposal page without measurement thereof.

BASIS OF PAYMENT

Excavation Cut – Pea Gravel shall be measured as described above and shall be paid for at the contract unit price which shall be full compensation for all work, materials, labor, tools, equipment, disposal, and incidentals required to complete the work as set forth in the description.

BID ITEM 20104 – EXCAVATION CUT - PEA GRAVEL/RUBBER MIX

DESCRIPTION

Excavation Cut – Pea Gravel/Rubber Mix shall consist of the loosening, loading, hauling and disposal of the existing playground surfacing at Tenney Park as identified on the plans per Article 201 of the Standard Specifications. The playground surfacing at Tenney Park is approximately 10" depth or shredded rubber tires, with approximately 7" of pea gravel below the surfacing.

The excavation quantities for this contract have been calculated by subtracting digital terrain models of the existing and proposed surfaces and sub surfaces within the different material areas. Cut (in place quantities) and fill have been estimated from these models. The Contractor is responsible to review attached earthwork calculations. Three-dimensional Microstation (.dgn) files containing the digital terrain models used for the earthwork calculations are available. The proposal quantity was computed by Microstation InRoads surface data volume computations and the assumptions listed above. Adjustments were made for excavation of seventeen (17) inches of existing playground surfacing.

Excess material shall be disposed offsite at a location to be determined and provided by the City at no extra cost to the City. Double handling and stockpiling of material is included in this bid item. Contractor to note all excavated areas shall be filled at the end of each work day. No excavated areas shall be "open" during non-work hours.

METHOD OF MEASUREMENT

Excavation Cut – Pea Gravel within the limits shown on the plans shall be measured by the cubic yard quantity as listed in the proposal page without measurement thereof.

BASIS OF PAYMENT

Excavation Cut – Pea Gravel shall be measured as described above and shall be paid for at the contract unit price which shall be full compensation for all work, materials, labor, tools, equipment, disposal, and incidentals required to complete the work as set forth in the description.

BID ITEM 20130 - UNDERDRAIN

DESCRIPTION

This work shall include all labor, equipment, materials, and incidentals required to install and connect four-inch perforated pipe underdrain, wrapped, including open graded base course and filter fabric sock as shown on the plans or as directed by the Engineer.

All costs associated with the connection of the underdrain to the inlet, as shown on the plans or as directed by the Engineer, shall be considered incidental to this item including stone, pipe, and excavation cut. The work involved with the placement of the perforated pipe shall be in accordance with Sections 612 and 645 of the latest edition of the Standard Specifications for Highway and Structure Construction of the State of Wisconsin, Department of Transportation.

Flexible drain pipe will not be allowed.

When installing the underdrain system, the Contractor shall maintain an 18" minimum clearance from playground equipment footings.

The Contractor shall be responsible for staking horizontal and vertical alignment of drain tile.

The Contractor shall contact City of Madison Parks Surveyor, Dan Rodman at 658-3087 at least 48 hours prior to field check underdrain elevations prior to backfilling.

METHOD OF MEASUREMENT

Underdrain shall be measured by the linear foot quantity as listed in the proposal page.

BASIS OF PAYMENT

Underdrain shall be measured as described above and shall be paid for at the contract unit price which shall be full compensation for all work, materials, tools, equipment, labor, hauling, placement, and incidentals required to complete the work as set forth in the description.

BID ITEM 20140 – GEOTEXTILE FABRIC TYPE SAS NON WOVEN

DESCRIPTION

Work under this bid item shall include all necessary work, labor and incidentals required to install Type SAS Non Woven Geotextile Fabric between the proposed subgrade/underdrain and the playground surfacing.

Geotextile fabric shall have a minimum 4 oz/sy fabric strength.

Overlap and staple pattern shall be in accordance with the manufacturer's recommendations, or as modified or approved in the field to accommodate the underlying play equipment. The Contractor shall provide to the City the manufacturer's recommended staple pattern.

METHOD OF MEASUREMENT

Geotextile Fabric Type SAS Non Woven shall be measured by the square yard quantity as listed in the proposal page without measurement thereof, not including run out in underdrain trenches or overlap.

BASIS OF PAYMENT

Geotextile Fabric Type SAS Non Woven shall be measured as described above and shall be paid for at the contract unit price which shall be full compensation for all work, materials, labor, tools, equipment, and incidentals required to complete the work as set forth in the description.

BID ITEM 20201 - FILL

DESCRIPTION

This item shall include all necessary work, labor and incidentals required to import and distribute fill to meet proposed subgrades. Fill shall comply with material described in Article 202 of the Standard Specifications.

The fill quantities for this contract have been computed by Microstation InRoads surface data volume. Adjustments were made for topsoil assuming excavation of six (6) inches of existing topsoil, excavation of seventeen (17) inches of existing playground surfacing, placement of six (6) inches of proposed topsoil, and placement of twelve (12) inches of playground surfacing.

Distribution of fill made available through excavation cut shall be incidental to BID ITEM 20101 EXCAVATION CUT.

Double handling, stockpiling and placing fill is included in this bid item.

METHOD OF MEASUREMENT

Fill shall be measured by the cubic yard quantity as listed in the proposal page without measurement thereof.

BASIS OF PAYMENT

Fill shall be measured as described above and shall be paid for at the contract unit price which shall be full compensation for all work, materials, labor, tools, equipment, disposal, and incidentals required to complete the work as set forth in the description.

BID ITEM 20217 – CLEAR STONE

DESCRIPTION

This item shall include the quantity of clear stone required for the construction entrance per BID ITEM 21011 – CONSTRUCTION ENTRANCE and does not include stone for construction of the underdrain, stone drain, or limestone retaining wall. Stone required for construction of the underdrain shall be incidental to BID ITEM 20130 – UNDERDRAIN. Stone required for construction of the limestone outcropping stone retaining wall shall be incidental to BID ITEM 90004 Limestone Outcropping Stone Retaining Wall. Stone required for the construction of the 24 inch diameter PVC pipe at Lake Edge Park shall be incidental to BID ITEM 90009 - STONE DRAIN.

METHOD OF MEASUREMENT

Clear Stone shall be measured by the ton as listed in the proposal page without measurement thereof.

BASIS OF PAYMENT

Clear Stone shall be measured as described above and shall be paid for at the contract unit price which shall be full compensation for all work, materials, labor, tools, equipment, disposal, and incidentals required to complete the work as set forth in the description.

BID ITEM 20221 - TOPSOIL

DESCRIPTION

This item shall include all necessary work, labor and incidentals required to distribute, dispose and/or place topsoil to meet proposed grades. Topsoil shall comply with Article 202 of the Standard Specifications.

Stripped topsoil can be stockpiled on site within the construction fence boundary. Stripped topsoil quantities are identified in the Plans under Design Calculations and in the proposal page.

The topsoil quantities for this contract have been computed by Microstation InRoads surface data volume computations and the assumptions listed above. Adjustments were made for topsoil assuming excavation of six (6) inches of existing topsoil, seventeen (17) inches of existing playground surfacing, and placement of six (6) inches of proposed topsoil. Any additional topsoil material required beyond quantities available through stripped topsoil are included in the quantities for this bid item. The estimated below quantities of topsoil include approximate excess topsoil quantities will need to be disposed of offsite. Topsoil shall be disposed of at the stockpile site at Yahara Hills Golf Course at no extra cost to the City.

Brigham Park: ~ 41 cubic yards
Lake Edge Park ~ 40 cubic yards
McGinnis ~ 40 cubic yards
Tenney Park: ~ 26 cubic yards

Double handling, stockpiling and placing topsoil is included in this bid item.

Contractor to note - the City of Madison Parks Division is to be called to inspect and approve the finish grade prior to seeding and mulching.

METHOD OF MEASUREMENT

Topsoil shall be measured by the square yard quantity as listed in the proposal page without measurement thereof.

BASIS OF PAYMENT

Topsoil shall be measured as described above and shall be paid for at the contract unit price which shall be full compensation for all work, materials, labor, tools, equipment, disposal, and incidentals required to complete the work as set forth in the description.

BID ITEM 20701 – TERRACE SEEDING

DESCRIPTION

This work shall consist of preparing seed beds, furnishing and sowing the required seed, furnishing and applying the required stabilizers, fertilizer, and mulching material on all disturbed areas including areas

damaged by construction activities, in accordance with Article 207 of the Standard Specifications. Seed mixture shall be either in whole, or a mixture of the City of Madison sun terrace mix and shade terrace mix applied appropriately based on shady and sunny areas of the site.

Since construction is limited to within the construction fence, no additional compensation shall be given for seeding quantities beyond what is specified in this contract.

Contractor to note – the City of Madison Playground Construction Inspector shall be called to inspect and approve the finish grade prior to seeding and mulching.

Contractor is responsible for obtaining seed bed germination per Article 207 of the Standard Specifications, regardless of site conditions.

METHOD OF MEASUREMENT

Terrace Seeding shall be measured by the square yard quantity as listed in the proposal page without measurement thereof.

BASIS OF PAYMENT

Terrace Seeding shall be measured as described above and shall be paid for at the contract unit price which shall be full compensation for all work, materials, tools, equipment, labor, hauling, placement, and incidentals required to complete the work as set forth in the description.

BID ITEM 20901 – LANDSCAPE BED

This bid item includes installation of 2 landscape beds including steel edging, 1 ½” decorative landscape stone, and 20 perennials and grasses at Lake Edge Park as shown on Sheet 2.7. Planting as part of this contract shall be completed per Article 209 – Trees, Shrubs, Perennials and Grasses of the current City of Madison Standard Specifications for Public Works Construction and as outlined in these Special Provisions.

Installation of stone drain shall be incidental to BID ITEM 90009 – STONE DRAIN. Installation of fieldstone ornamental boulders shall be incidental to BID ITEM 90008 – FIELDSTONE ORNAMENTAL BOULDER.

Planting for all perennials shall not be done during periods of drought or prolonged heat.

Care and maintenance of plants during the contract and through the one year guarantee period shall be incidental to this bid item. Proper care of plants shall consist of watering, weeding, and other work as may be necessary to keep the plants in a neat appearance and in a healthy growing condition. No additional compensation shall be given to Contractors for watering related to dry conditions, except as specified in Subsection 209.6(c).

It shall be the Contractor’s responsibility to thoroughly water and care for plants, especially during the ten (10) day period after initial planting. No additional compensation shall be given for watering during the first ten (10) days of initial planting, regardless of drought status.

The Contractor shall submit samples of stone mulch prior to installation for approval by the Engineer.

METHOD OF MEASUREMENT

Landscape Bed shall be measured per each individual bed.

BASIS OF PAYMENT

Landscape Bed shall be measured as described above and shall be paid for at the contract unit price which shall be full compensation for all work, materials, tools, equipment, labor, hauling, placement, disposal and incidentals required to complete the work as set forth in the description.

BID ITEM 21017 - SILT SOCK (8 INCH) - COMPLETE

DESCRIPTION

Work under this item shall include all work, materials, labor, and incidentals required to install, maintain and remove silt sock at locations shown on the plans and around any subsoil/topsoil staging piles and to install, maintain and remove additional undistributed silt sock as a precautionary measure to address emergency erosion control.

METHOD OF MEASUREMENT

Silt Sock (8 inch) – Complete, shall be measured by linear foot for the completed work as described above.

BASIS OF PAYMENT

Silt Sock (8 inch) – Complete, shall be measured as described above and shall be paid for at the contract unit price which shall be full compensation for all work, materials, tools, equipment, labor, hauling, placement, disposal and incidentals required to complete the work as set forth in the description.

BID ITEM 21061 - EROSION MATTING, CLASS I URBAN TYPE A

DESCRIPTION

Work under this item shall include all work, materials, labor and incidentals necessary to install Erosion Matting, Class I Urban Type A on all seeded disturbed areas as noted in the plans.

The Class and Type requirements match those of the Wisconsin Department of Transportation Product Acceptability List (PAL) nomenclature. Products listed in the PAL as Class I Urban Type A are all 100 percent biodegradable, and therefore do not need to be designated ORGANIC.

Work under this bid item shall be as set forth in the latest edition of the Standard Specifications, except the Contractor shall note that special care with anchorage devices shall be required so as to not injure park users. Anchorage devices for the mat are required to be a product identified on the Wisconsin Department of Transportation Erosion Control Product Acceptability List (PAL) under the category of "Anchoring Devices for Class I, Urban Erosion Mat."

Anchorage devices shall be completely biodegradable. Photobiodegradable or metal anchorage devices shall not be allowed. Materials deemed to present a hazard from splintering or spearing shall not be approved, including solid wood devices.

Erosion Matting, Class I Urban Type A shall be installed correctly with correct anchorage, staple pattern, and overlap. To verify the staple pattern, the Contractor shall provide to the Engineer a manufacturer's recommended staple pattern for the type of matting installed.

Trimming of the Erosion Matting, Class I Urban Type A required to accommodate existing tree locations shall be considered incidental to this bid item.

METHOD OF MEASUREMENT

Erosion Matting, Class I Urban Type A shall be measured by the square yard quantity as listed in the proposal page without measurement thereof, not including run out and overlap.

BASIS OF PAYMENT

Erosion Matting, Class I Urban Type A shall be measured as described above and shall be paid for at the contract unit price which shall be full compensation for all work, materials, tools, equipment, labor, hauling, placement, disposal and incidentals required to complete the work as set forth in the description.

BID ITEM 40102 – CRUSHED AGGREGATE BASE COURSE GRADATION NO. 2

DESCRIPTION

Work under this bid item shall include all work, materials, labor and incidentals necessary for the Contractor to install 9 inches of Crushed Aggregate Base Course Gradation No. 2 for asphalt path construction.

All aggregate base course shall extend 6 inches beyond the proposed pavement edge and shall have 3 inches of topsoil and terrace seed over the extended gravel base to be paid for under BID ITEM 20221 – TOPSOIL and 20701 – TERRACE SEEDING for all paved paths, except for where the path extends into the playground.

The Contractor shall contact Dan Rodman at 209-7012 at least 48 hours prior to proof subgrade elevations prior to paving.

METHOD OF MEASUREMENT

Crushed Aggregate Base Course Gradation No. 2 shall be measured by the ton as listed in the proposal page without measurement thereof.

BASIS OF PAYMENT

Crushed Aggregate Base Course Gradation No. 2 shall be measured as described above and shall be paid for at the contract unit price which shall be full compensation for all work, materials, tools, equipment, labor, hauling, placement, disposal and incidentals required to complete the work as set forth in the description.

BID ITEM 40201 – 3 INCH DEPTH HMA PAVEMENT TYPE E-0.3

DESCRIPTION

Work under this item shall include all work, materials, labor and incidentals necessary for the Contractor to provide and install 3 Inch Depth HMA Pavement Type E-0.3 in accordance with these plans and specifications and the latest edition of the Standard Specifications.

METHOD OF MEASUREMENT

3 Inch Depth HMA Pavement Type E-0.3 shall be measured by the ton as listed on the proposal page without measurement thereof.

BASIS OF PAYMENT

3 Inch Depth HMA Pavement Type E-0.3 shall be measured as described above and shall be paid for at the contract unit price which shall be full compensation for all work, materials, tools, equipment, labor, hauling, placement, disposal and incidentals required to complete the work as set forth in the description.

BID ITEM 50455 – STORM TEE

DESCRIPTION

Work under this item shall include all work, materials, labor and incidentals necessary for the Contractor to provide and install Insert-A-Tee or equivalent to connect underdrain to 12" storm sewer at Lake Edge Park as shown on plans. Tee shall meet requirements set forth in Article 504.2(i) of the City of Madison Standard Specifications for Public Works Construction.

METHOD OF MEASUREMENT

Storm Tee shall be measured by each tee as listed on the proposal page without measurement thereof.

BASIS OF PAYMENT

Storm Tee shall be measured as described above and shall be paid for at the contract unit price which shall be full compensation for all work, materials, tools, equipment, labor, hauling, placement, disposal and incidentals required to complete the work as set forth in the description.

BID ITEM 90000 - CONSTRUCTION FENCING (PLASTIC)

DESCRIPTION

Work under this item shall include all work, materials, labor and incidentals necessary for the Contractor to provide, install, maintain and remove construction fence from the project site as shown on the plans.

Construction fencing shall be installed to discourage access to the construction area by the general public during the course of the project. Fencing shall be maintained throughout construction and adjusted or removed at the request of the Engineer.

This fence shall be highly visible (orange), constructed of a plastic web, and able to withstand the expected amount of use it shall receive on a construction site. Relocation of fencing may be required as the work progresses. No extra payment shall be made for temporarily opening and re-closing the fence, or relocation of the fencing as needed to perform the work. Fencing shall be left in place until construction operations are complete.

Construction fencing shall be International Orange color, high-density polyethylene mesh conforming to the following:

- Mesh opening: 1 inch minimum to 3 inch maximum
- Height: 4 feet
- Ultimate tensile strength: Avg 3000 lb per 4' width (ASTM D638)

METHOD OF MEASUREMENT

Construction Fence (Plastic) shall be measured by the linear foot quantity as listed in the proposal page without measurement thereof.

BASIS OF PAYMENT

Construction Fence (Plastic) shall be measured as described above and shall be paid for at the contract unit price which shall be full compensation for all work, materials, tools, equipment, labor, hauling, placement, disposal and incidentals required to complete the work as set forth in the description.

BID ITEM 90001 - PLAYGROUND EQUIPMENT INSTALLATION

DESCRIPTION

All play equipment **will be purchased by the City of Madison** and ordered for delivery from the vendors to the Contractor's pre-determined receiving location. The Contractor shall provide equipment and labor for off-loading, loading, and trucking as needed. Contractor is responsible for securing all deliveries and insuring the completeness of the order prior to installation. Contractor is required to inspect all deliveries received for damage and shall notify the Engineer when materials have been received and inspected. Inspection by the Contractor shall occur upon delivery. If materials are found to have been damaged upon delivery to Contractor, Contractor shall inform vendor and provide photographs of damage, and, if necessary, store the materials at the receiving location. If the materials are damaged after delivery to Contractor but before installation is complete, Contractor shall be responsible for securing replacement materials.

The Contractor shall contact the Engineer within three (3) working days of receipt of the playground equipment to confirm equipment matches what was specified. Original packing slips from each shipment shall be provided to the Engineer.

The Contractor shall contact the City of Madison Playground Construction Inspector both prior to installation to coordinate exact date for playground installation and after installation is complete to verify correct layout.

All installation of equipment shall adhere and conform to the installation specifications as provided by the playground manufacturer, and shall be further inspected by the City of Madison Playground Construction Inspector and manufacturer following installation. The Contractor is required to make any necessary adjustments to the play equipment installation determined by the City of Madison Playground Construction Inspector to rectify incorrect installation. Actual layout of play system and components to be installed shall comply with that shown in the plans and be confirmed in the field the City of Madison Playground Construction Inspector and Dan Rodman ((608) 658-3087) the City of Madison Parks Surveyor. Please allow 48 hours to schedule.

The Contractor shall contact the City of Madison Parks Surveyor throughout installation to verify that playground equipment is installed at the correct horizontal layout and vertical elevations with respect to the proposed playground surfacing elevation identified on the plans.

The playground shall be installed to the correct elevations as specified by the playground manufacturer and installation specifications to meet required elevations based on the finished playground surfacing elevations as shown on the plans.

For Lake Edge Park, play equipment installation shall also include installation of a Big Toys Rock N' Cross and Saddle Spinner. This piece of equipment shall be removed from its current location by City staff, and stored at the Goodman Maintenance Facility located at 1402 Wingra Creek Parkway, for pickup by the Contractor to install at Lake Edge Park.

For Tenney Park, footings shall be installed per recommendations set forth by CGC Inc. identified in the email to Sarah Lerner, sent on November 22, 2016 and included with soil borings in Attachment 2, and as included below.

See Appendix 1 for the Manufacturers' Playground Equipment Installation Instructions for each park. Appendix 1 is available as a separate downloadable file on Bid Express and shall be considered part of this contract.

The soil profile observed at Boring 1 at Tenney Park revealed about 5-in. of rubber and wood chips underlain by very loose to medium dense sands that contained varying percentages of silt and gravel (plus a thin clay seam near 9 ft). Groundwater was encountered at a depth of 3.6 ft shortly after drilling completion, which corresponds to an elevation of about EL 846.5 (USGS Datum) based on an estimated

DCi ground surface elevation interpolation of EL850+/- . In CGC's opinion, the observed granular soils at a minimum footing depth of 4 ft (for frost protection) are acceptable for support of foundations designed for a maximum design soil bearing pressure of 1000psf. Foundations should be a minimum of 18-in. wide for strip footings and 30-in. square for column pads. Footing subgrades should be cut with a smooth-edged bucket in conjunction with necessary dewatering to conduct footing construction "in the dry". Dewatering shall be paid under bid item 90010 – TYPE I Dewatering. The Contractor shall place either a 3-in. concrete mud mat or at least 6-in. of compacted clear stone be placed immediately below footing subgrade after footing excavations are complete. The Contractor shall contact the Engineer for approval prior to setting concrete. If loose areas are detected, extra stone or concrete will be required.

METHOD OF MEASUREMENT

Playground Equipment Installation shall be measured by lump sum per each park playground site for the completed work as described above.

BASIS OF PAYMENT

Playground Equipment Installation shall be measured as described above and shall be paid at the contract unit price which shall be full compensation for all work, materials, tools, equipment, labor, hauling, placement, disposal and incidentals required to complete the work as set forth in the description. Playground equipment concrete footing installation, materials and excavation are incidental to this bid item.

BID ITEM 90002 - PLAYGROUND TIMBERS

DESCRIPTION

Work under this item shall include all work, materials, labor and incidentals necessary for the Contractor to install playground timbers (Landscape Structures® Tufftimbers™) at each project site as shown on the plans.

All playground timbers **will be purchased by the City of Madison** and ordered for delivery from the vendors to the Contractor's pre-determined receiving location. The Contractor shall provide equipment and labor for off-loading, loading, and trucking as needed. Contractor is responsible for securing all deliveries and insuring the completeness of the order prior to installation. Contractor is required to inspect all deliveries received for damage and shall notify the Engineer when materials have been received and inspected. Inspection by the Contractor shall occur upon delivery. If materials are found to have been damaged upon delivery to Contractor, Contractor shall inform vendor and provide photographs of damage, and, if necessary, store the materials at the receiving location. If the materials are damaged after delivery to Contractor but before installation is complete, Contractor shall be responsible for securing replacement materials.

The Contractor shall contact the Engineer within three (3) working days of receipt of the playground timbers to confirm equipment matches what was specified. Original packing slips from each shipment shall be provided to the Engineer.

All installation of playground timbers shall adhere and conform to the installation specifications as provided by the manufacturer, and shall be further inspected by the Playground Construction Inspector following installation. Actual layout of playground timbers shall comply with the dimensions shown on the plans and be confirmed in the field by the Playground Construction Inspector. The playground timbers shall be installed at the correct elevations as specified on the plans. The Contractor shall field confirm playground timber placement does not encroach upon the play equipment fall zones as shown in the attached plans.

The Contractor shall contact the Parks Surveyor throughout installation to verify that playground timbers are installed at the correct horizontal and vertical location.

METHOD OF MEASUREMENT

Playground Timbers shall be measured per each playground timber as listed in the proposal page without measurement thereof.

BASIS OF PAYMENT

Playground Timbers shall be measured as described above and shall be paid for at the contract unit price which shall be full compensation for all work, materials, tools, equipment, labor, hauling, placement, disposal and incidentals required to complete the work as set forth in the description.

BID ITEM 90003 – PLAYGROUND SURFACING WOOD FIBER MULCH

DESCRIPTION

This item shall include all necessary work, labor and incidentals required to load, transport and distribute wood fiber mulch playground surfacing.

All playground surfacing wood fiber mulch shall be provided by the City of Madison. The playground surfacing wood fiber mulch shall be available at the City of Madison Transfer Station, 121 E. Olin Ave. The transfer station's hours of operation are 7:30 am to 2:30 pm, Monday thru Friday, excluding City holidays. The Contractor shall contact Bill Durkin at the City of Madison Streets Department (phone: 608-266-4911) a minimum of seven (7) working days prior to any anticipated dates of the playground surfacing wood fiber mulch pick up. The Contractor shall provide equipment and labor for loading, trucking and off-loading as needed.

The playground surfacing shall be installed to the finished elevations as indicated on the plans. Minimum installed depth of wood fiber mulch is twelve (12) inches.

Double handling, stockpiling and placing wood fiber mulch shall be incidental to this bid item.

METHOD OF MEASUREMENT

Playground Surfacing Wood Fiber Mulch shall be measured by the cubic yard quantity as listed in the proposal page without measurement thereof.

BASIS OF PAYMENT

Playground Surfacing Wood Fiber Mulch shall be measured as described above and shall be paid for at the contract unit price which shall be full compensation for all work, labor, tools, equipment, and incidentals required to complete the work as set forth in the description.

BID ITEM 90004 – LIMESTONE OUTCROPPING STONE RETAINING WALL

DESCRIPTION

Work under this item shall include all work, materials, labor and incidentals necessary for the Contractor to provide and install the retaining walls in accordance as special provisions that follows, and as shown on the drawings.

- The stone shall be sound, outcropping limestone such as Eden, Chilton, Fond du lac outcropping stone that matches the general color of the existing stepped stone revetments at Tenney Park. Granite boulders shall not be accepted.

Photo of existing limestone wall at Tenney Park.



- The stone shall be generally rectangular in plan and cross section. The Engineer shall approve the source/supplier of cut stone blocks before they are brought to the site. Any stone that has been cracked by shipping, handling, or placing and does not meet the size range specified above shall be removed from the project and replaced at no extra cost to the City.
- Stone shall be sized to match length, width, and depth dimensions shown on Detail 5.4. Supplier shall pick stones of similar height dimensions for each layer. Stones shall have face and sides perpendicular to each other or angles that will match adjacent stone to achieve a tight fit. Stones intended for each layer shall be marked on the back to identify exact location in the finished work.
- All stone shall be produced from the same quarry.
- All stone shall be selected at the quarry for size and rectangularity within the following range:
 - Height: 10" to 20" (Note: Height of wall from playground surfacing to top of wall shall be 18")
 - Depth: 20" to 36"
 - Length: 36" Minimum
- The stone shall be durable, sound, free from detrimental cracks, seams and other defects which tend to increase deterioration from natural causes or cause breakage in handling and/or placing. A visual test shall be made at the quarry for elongation, cracks, deterioration and other defects visible to the naked eye on at least two-thirds of the surface area of the stone. Ten percent of the stone checked for cracks shall be wetted and re-inspected for minute cracks to determine if they would be detrimental to the stone quality and if additional inspections are necessary on all stone. Stones with cracks that are detrimental to a long-lasting product shall not be shipped to the project site. All stone shall be highly resistant to weathering and disintegration under freezing and thawing and wetting and drying conditions, and shall be of a quality to ensure permanence of the structure in the climate in which it is to be used. A high argillaceous or shale content is often indicative of poorer quality rock being more susceptible to weathering, abrasion, thin bedding, close fracturing and other undesirable rock properties.
- Materials which have been delivered to the project site and are rejected, whether in stockpile or in place in the structure, shall be removed from the project site at the Contractor's expense. Any damages to approved stone prior to substantial completion, due to Contractor or subcontractor operations, wave activity, or otherwise, shall be repaired by the Contractor at no additional cost to the Owner.

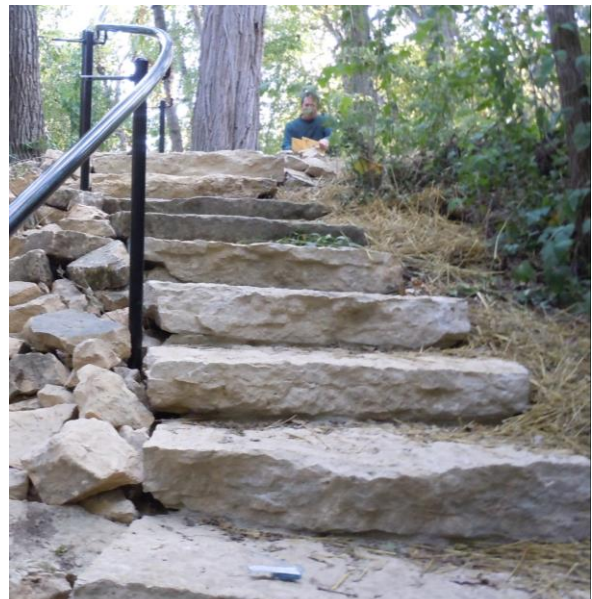


Photo of general aesthetic of proposed retaining wall stone.

Cost for materials, delivery, import and installation of backfill, crushed aggregate, leveling pad, topsoil, and Geotextile fabric are incidental to this bid item.

CONSTRUCTION METHODS

The retaining wall shall be placed in accordance with the lines, elevations, and tolerances as shown on the plans.

- A suitable foundation, as approved by the Engineer shall be provided to preclude settlement. Filter Fabric shall be installed under the bed, as shown on the drawings. Clear stone and filter fabric shall be installed according to the Standard Specifications. Each stone shall be firmly set with no rocking or tipping, providing a firm foundation for subsequent layers.
- The wall leveling pad shall be non-frost susceptible, well graded compacted crushed aggregate (GW-Unified Soil Classification). The wall leveling pad shall be as wide as the proposed blocks or 12 inches (minimum) whichever is greater and shall be compacted to 98% Standard Proctor Density. The bottom of the bottom row of blocks shall be flat and 100% of the stone surface shall bear on the leveling pad.
- Stone shall be placed tightly together such that at least 60% of all joined faces are in direct contact and no more than 1.5-inch gap exists at any point along the joint. Vertical seams shall be staggered. Chiseling or cutting of the stone may be needed. Any costs for working the stone shall be included in the prices bid.
- The finished surface aesthetic is critical. The stone layers shall follow the requirements noted on the plan. The tread width shall be consistent along each elevation and the stones shall fit snugly together and have no gaps larger than 1.5-inch. Working of stone faces may be required to achieve desired tolerances. The intention of the above tolerances is that the work will be generally built to the required elevation, slopes and grades, and that the outer surfaces shall present a neat and aesthetic appearance. Placed material not meeting these intentions shall be removed and/or reworked to the satisfaction of the Engineer.
- The Contractor shall lay out the work, provide any survey control as needed for control of the work beyond the initial stakeout by City.
- The initial retaining wall section will be considered as a test section. The purpose of the test sections will be to establish an in-the-field standard, built in accordance with the requirements of the contract documents, to which the remainder of the stone wall shall be constructed. The Contractor shall make whatever modifications are necessary to placement procedures such that this standard shall be achieved consistently during construction of the remainder of the revetment. The Contractor shall be required to rework deficient portions of the test section to meet these requirements.
- The Contractor shall make any necessary modifications to placement equipment and procedures to achieve the specified in-place requirements.
- The Contractor shall exercise care in the transportation of all stone materials to prevent cracking, splitting, spalling, etc., that would otherwise lead to rejection at the job site.

METHOD OF MEASUREMENT

Limestone Outcropping Stone Retaining Wall shall be measured by the square foot of face on a vertical plane between the top of the leveling pad and a line indicating the top of wall including as shown on the plans. Unless ordered by the Engineer, wall area constructed above or below these limits shall not be measured for payment. The total quantity shall be the sum of the quantities for each wall segment.

BASIS OF PAYMENT

Limestone Outcropping Stone Retaining Wall, measured as provided above, shall be paid for at the contract unit price per linear foot, which shall be full compensation for site preparation, including all necessary excavation and disposal of surplus materials, supplying all necessary wall components to produce a functional system, construction of the retaining system as shown on Sheet 5.4 and including, but not limited to materials, delivery, installation of stone, crushed aggregate and Geotextile fabric, backfilling, compaction, and for furnishing all tools, labor, and equipment necessary to complete the work.

BID ITEM 90005 – LIMESTONE BOULDER BENCH

DESCRIPTION

Work under this item shall include all work, materials, labor and incidentals necessary for the Contractor to install limestone outcropping stone to serve as a bench in accordance with these plans and specifications. The limestone shall match the same material and color as the outcropping stone described in BID ITEM 90004 - LIMESTONE OUTCROPPING STONE RETAINING WALL. The outcropping stone shall not have significant sharp or jagged edges and shall be free of mud and debris.

- The limestone seat must be rectangular, and selected for size and rectangularity within the following range:
 - Height: 28" to 32" (to create a height of 16"-20" from playground surfacing)
 - Depth: 28" to 34"
 - Length: 48"-60" Minimum
- The Contractor shall submit photos of each boulder for approval by the Engineer prior to delivery to the site. If deemed necessary by the Engineer, the Contractor shall coordinate a site visit to the Contractor's designated supplier to review the proposed boulders prior to delivery. If the Contractor delivers boulders to the site without preapproval by the Engineer, the Contractor shall be responsible for their replacement per the direction of the Engineer at no additional cost to the City

CONSTRUCTION METHODS

- The Contractor shall coordinate the placement of the limestone with an on-site meeting with the Engineer. The Contractor shall provide 48 hrs notice to the Engineer prior to the requested meeting date. At the site meeting, each stone location will be staked and a particular stone assigned to that location.
- Stones shall be placed prior to the installation of playground surfacing and shall be placed directly on the subgrade geotextile fabric. The stone shall be placed with the predominately flat face down or per the direction of the Engineer.
- If the Contractor installs stones without preapproval of the staking by the Engineer, the Contractor shall be responsible for any necessary adjustments per the direction of the Engineer at not additional cost to the City.

METHOD OF MEASUREMENT

Limestone Boulder Bench shall be measured per each boulder as listed in the proposal page.

BASIS OF PAYMENT

Limestone Boulder Bench shall be measured as described above and shall be paid for at the contract unit price which shall be full compensation for all work, materials, tools, equipment, labor, hauling, placement, disposal and incidentals required to complete the work as set forth in the description.

BID ITEM 90006 – INSTALL BENCH

Work under this item shall include all work, materials, labor and incidentals necessary for the Contractor to assemble and install KayPark (Part #6BARP) bench, surface mounted or in-ground mounted at the locations specified on the plans.

All benches **will be purchased by the City of Madison** and ordered for delivery from the vendors to the Contractor's pre-determined receiving location. The Contractor shall provide equipment and labor for off-

loading, loading, and trucking as needed. Contractor is responsible for securing all deliveries and insuring the completeness of the order prior to installation. Contractor is required to inspect all deliveries received for damage and shall notify the Engineer when materials have been received and inspected. Inspection by the Contractor shall occur upon delivery. If materials are found to have been damaged upon delivery to Contractor, Contractor shall inform vendor and provide photographs of damage, and, if necessary, store the materials at the receiving location. If the materials are damaged after delivery to Contractor but before installation is complete, Contractor shall be responsible for securing replacement materials.

The Contractor shall contact the Engineer within three (3) working days of receipt of the benches to confirm equipment matches what was specified. Original packing slips from each shipment shall be provided to the Engineer.

All handling and installation shall be according to manufacturer's specifications. The complete installation specifications shall be included in the shipment of equipment from the vendor.

New benches shall either be surface mounted to an 8'x5', 5" thick concrete slab unless identified as being installed within the playground surfacing area which shall be in-ground mounted on sono-tube or pier-type footings as specified by the manufacturer's installation instructions. Benches may also be identified to mount on an existing slab. Concrete for benches requiring new concrete slabs shall be paid for under BID ITEM 30301 – 5 INCH CONCRETE SIDEWALK.

METHOD OF MEASUREMENT

Install Bench shall be measured per each individual installed bench as listed in the proposal page.

BASIS OF PAYMENT

Install Bench shall be measured as described above and shall be paid for at the contract unit price which shall be full compensation for all work, materials, tools, equipment, labor, hauling, placement, disposal and incidentals required to complete the work as set forth in the description.

BID ITEM 90007 – INSTALLATION OF NATURAL WOOD LOG

DESCRIPTION

Work under this item shall include all work, materials, labor and incidentals necessary for the Contractor to install City of Madison provided logs in accordance with these plans and specifications.

Natural wood logs shall be provided by the City and delivered to the project site. The logs will range in size from approximately 8 to 12 feet long and approximately 24 to 30 inches in diameter. The logs will be delivered to a location in the park adjacent to an existing asphalt path. The Contractor shall be responsible for transporting the logs to the playground from the delivery location.

CONSTRUCTION METHODS

The Contractor shall coordinate the placement of the logs with an on-site meeting with the Engineer. This meeting shall coincide with the boulder staking meeting if applicable per Bid Items 90013 and 90014. The Contractor shall provide 48 hrs notice to the Engineer prior to the requested meeting date. At the site meeting, each log location will be staked and a particular log assigned to that location.

The logs shall be placed on top of the installed playground surfacing and per the direction of the Engineer.

METHOD OF MEASUREMENT

Installation of Natural Wood Log shall be measured per each log as listed in the proposal page.

BASIS OF PAYMENT

Installation of Natural Wood Log shall be measured as described above and shall be paid for at the contract unit price which shall be full compensation for all work, materials, tools, equipment, labor, hauling, placement, disposal and incidentals required to complete the work as set forth in the description.

BID ITEM 90008 – FIELDSTONE ORNAMENTAL BOULDER

DESCRIPTION

Work under this item shall include all work, materials, labor and incidentals necessary for the Contractor to install fieldstone boulders in accordance with these plans and specifications at Lake Edge Park. The boulders shall be glacially tumbled, natural fieldstone of the approximate shown on plans. The boulders shall not have significant sharp or jagged edges and shall be free of mud and debris. The ornamental boulders shall be approximately 24"-38" in diameter

The Contractor shall submit photos of each boulder for approval by the Engineer prior to delivery to the site. If deemed necessary by the Engineer, the Contractor shall coordinate a site visit to the Contractor's designated supplier to review the proposed boulders prior to delivery. If the Contractor delivers boulders to the site without preapproval by the Engineer, the Contractor shall be responsible for their replacement per the direction of the Engineer at no additional cost to the City

The Contractor shall coordinate the placement of the boulders with an on-site meeting with the Engineer. The Contractor shall provide 48 hrs notice to the Engineer prior to the requested meeting date. At the site meeting, each boulder location will be staked and a particular boulder assigned to that location.

The boulders shall be placed with the predominately flat face down or per the direction of the Engineer.

If the Contractor installs boulders without preapproval of the staking by the Engineer, the Contractor shall be responsible for any necessary adjustments per the direction of the Engineer at no additional cost to the City.

METHOD OF MEASUREMENT

Fieldstone Ornamental Boulder shall be measured per each boulder as listed in the proposal page.

BASIS OF PAYMENT

Fieldstone Ornamental Boulder shall be measured as described above and shall be paid for at the contract unit price which shall be full compensation for all work, materials, tools, equipment, labor, hauling, placement, disposal and incidentals required to complete the work as set forth in the description.

BID ITEM 90009 – STONE DRAIN

DESCRIPTION

Work under this item shall include all work, materials, labor and incidentals necessary for the Contractor to provide and install A 24 inch diameter PVC Pipe, 24 inch deep at Lake Edge Park as shown on Sheet 2.7. Installation of 3" clear stone and geotextile fabric shall be incidental to this bid item.

METHOD OF MEASUREMENT

Stone Drain shall be measured by each installed pipe as listed on the proposal page without measurement thereof.

BASIS OF PAYMENT

Stone Drain shall be measured as described above and shall be paid for at the contract unit price which shall be full compensation for all work, materials, tools, equipment, labor, hauling, placement, disposal and incidentals required to complete the work as set forth in the description.

BID ITEM 90010 – TYPE I DEWATERING

DESCRIPTION

Work under this item shall include all work, materials, labor and incidentals necessary for the Contractor to perform Type I Dewatering as necessary for any work conducted at Tenney Park. Soil borings at Tenney Park, included as Attachment 2, show that at the time the boring occurred, groundwater was encountered at 3.6' below grade. If the Contractor encounters groundwater as part of the Tenney Park playground construction, they shall perform Type I Dewatering per Article 502.1(c) Dewatering of the City of Madison Standard Specifications for Public Works Construction. The City of Madison shall be responsible for securing a DNR Pit/Trench Dewatering Permit. If groundwater is not encountered during this project, this bid item will be eliminated.

METHOD OF MEASUREMENT

Type I Dewatering shall be measured lump sum as listed on the proposal page without measurement thereof.

BASIS OF PAYMENT

Type I Dewatering shall be measured as described above and shall be paid for at the contract unit price which shall be full compensation for all work, materials, tools, equipment, labor, hauling, placement, disposal and incidentals required to complete the work as set forth in the description.

BID ITEM 90011 – REMOVE EXISTING BENCH

DESCRIPTION

Work under this item shall include all work, materials, labor and incidentals necessary for the Contractor to remove and dispose of an existing park bench. Removal of the concrete slab shall be paid for under BID ITEM 20101 – EXCAVATION CUT.

The removed bench and mounting hardware shall be disposed of at a suitable location determined by the Contractor at no additional cost to the City of Madison.

METHOD OF MEASUREMENT

Remove Existing Bench shall be measured per each individual removed bench as listed in the proposal page.

BASIS OF PAYMENT

Remove Existing Bench shall be measured as described above and shall be paid for at the contract unit price which shall be full compensation for all work, materials, tools, equipment, labor, hauling, placement, disposal and incidentals required to complete the work as set forth in the description.

END OF SPECIAL PROVISIONS

SECTION E: BIDDERS ACKNOWLEDGEMENT

**2017 PARK PLAYGROUND IMPROVEMENTS - GROUP 3
CONTRACT NO. 7929**

Bidder must state a Unit Price and Total Bid for each item. The Total Bid for each item must be the product of quantity, by Unit Price. The Grand Total must be the sum of the Total Bids for the various items. In case of multiplication errors or addition errors, the Grand Total with corrected multiplication and/or addition shall determine the Grand Total bid for each contract. The Unit Price and Total Bid must be entered numerically in the spaces provided. All words and numbers shall be written in ink.

1. The undersigned having familiarized himself/herself with the Contract documents, including Advertisement for Bids, Instructions to Bidders, Form of Proposal, City of Madison Standard Specifications for Public Works Construction - 2017 Edition thereto, Form of Agreement, Form of Bond, and Addenda issued and attached to the plans and specifications on file in the office of the City Engineer, hereby proposes to provide and furnish all the labor, materials, tools, and expendable equipment necessary to perform and complete in a workmanlike manner the specified construction on this project for the City of Madison; all in accordance with the plans and specifications as prepared by the City Engineer, including Addenda Nos. _____ through _____ to the Contract, at the prices for said work as contained in this proposal. (Electronic bids submittals shall acknowledge addendum under Section E and shall not acknowledge here)
2. If awarded the Contract, we will initiate action within seven (7) days after notification or in accordance with the date specified in the contract to begin work and will proceed with diligence to bring the project to full completion within the number of work days allowed in the Contract or by the calendar date stated in the Contract.
3. The undersigned Bidder or Contractor certifies that he/she is not a party to any contract, combination in form of trust or otherwise, or conspiracy in restraint of trade or commerce or any other violation of the anti-trust laws of the State of Wisconsin or of the United States, with respect to this bid or contract or otherwise.
4. I hereby certify that I have met the Bid Bond Requirements as specified in Section 102.5.
(IF BID BOND IS USED, IT SHALL BE SUBMITTED ON THE FORMS PROVIDED BY THE CITY. FAILURE TO DO SO MAY RESULT IN REJECTION OF THE BID).
5. I hereby certify that all statements herein are made on behalf of _____ (name of corporation, partnership, or person submitting bid) a corporation organized and existing under the laws of the State of _____ a partnership consisting of _____; an individual trading as _____; of the City of _____ State of _____; that I have examined and carefully prepared this Proposal, from the plans and specifications and have checked the same in detail before submitting this Proposal; that I have fully authority to make such statements and submit this Proposal in (its, their) behalf; and that the said statements are true and correct.

SIGNATURE

TITLE, IF ANY

Sworn and subscribed to before me this _____ day of _____, 20_____.

(Notary Public or other officer authorized to administer oaths)
My Commission Expires _____

Bidders shall not add any conditions or qualifying statements to this Proposal.

SECTION F: BEST VALUE CONTRACTING
2017 PARK PLAYGROUND IMPROVEMENTS - GROUP 3
CONTRACT NO. 7929

Best Value Contracting

1. The Contractor shall indicate the non-apprenticeable trades used on this contract.

2. Madison General Ordinance (M.G.O.), 33.07(7), does provide for some exemptions from the active apprentice requirement. Apprenticeable trades are those trades considered apprenticeable by the State of Wisconsin. Please check applicable box if you are seeking an exemption.

- Contractor has a total skilled workforce of four or less individuals in all apprenticeable trades combined.
- No available trade training program; The Contractor has been rejected by the only available trade training program, or there is no trade training program within 90 miles.
- Contractor is not using an apprentice due to having a journey worker on layoff status, provided the journey worker was employed by the contractor in the past six months.
- First-time Contractor on City of Madison Public Works contract requests a onetime exemption but intends to comply on all future contracts and is taking steps typical of a "good faith" effort.
- Contractor has been in business less than one year.
- Contractor doesn't have enough journeyman trade workers to qualify for a trade training program in that respective trade.
- An exemption is granted in accordance with a time period of a "Documented Depression" as defined by the State of Wisconsin.

3. The Contractor shall indicate on the following section which apprenticeable trades are to be used on this contract. Compliance with active apprenticeship, to the extent required by M.G.O. 33.07(7), shall be satisfied by documentation from an applicable trade training body; an apprenticeship contract with the Wisconsin Department of Workforce Development or a similar agency in another state; or the U.S Department of Labor. This documentation is required prior to the Contractor beginning work on the project site.

- The Contractor has reviewed the list and shall not use any apprenticeable trades on this project.

LIST APPRENTICABLE TRADES (check all that apply to your work to be performed on this contract)

- BRICKLAYER
- CARPENTER
- CEMENT MASON / CONCRETE FINISHER
- CEMENT MASON (HEAVY HIGHWAY)
- CONSTRUCTION CRAFT LABORER
- DATA COMMUNICATION INSTALLER
- ELECTRICIAN
- ENVIRONMENTAL SYSTEMS TECHNICIAN / HVAC SERVICE TECH/HVAC INSTALL / SERVICE
- GLAZIER
- HEAVY EQUIPMENT OPERATOR / OPERATING ENGINEER
- INSULATION WORKER (HEAT & FROST)
- IRON WORKER
- IRON WORKER (ASSEMBLER, METAL BLDGS)
- PAINTER & DECORATOR
- PLASTERER
- PLUMBER
- RESIDENTIAL ELECTRICIAN
- ROOFER & WATER PROOFER
- SHEET METAL WORKER
- SPRINKLER FITTER
- STEAMFITTER
- STEAMFITTER (REFRIGERATION)
- STEAMFITTER (SERVICE)
- TAPER & FINISHER
- TELECOMMUNICATIONS (VOICE, DATA & VIDEO) INSTALLER-TECHNICIAN
- TILE SETTER

SECTION G: BID BOND

KNOW ALL MEN BY THESE PRESENT, THAT Principal and Surety, as identified below, are held and firmly bound unto the City of Madison, (hereinafter referred to as the "Obligee"), in the sum of five per cent (5%) of the amount of the total bid or bids of the Principal herein accepted by the Obligee, for the payment of which the Principal and the Surety bind themselves, their heirs, executors, administrators, successors and assigns, jointly and severally, firmly by these presents.

The conditions of this obligation are such that, whereas the Principal has submitted, to the City of Madison a certain bid, including the related alternate, and substitute bids attached hereto and hereby made a part hereof, to enter into a contract in writing for the construction of:

2017 PARK PLAYGROUND IMPROVEMENTS - GROUP 3 CONTRACT NO. 7929

1. If said bid is rejected by the Obligee, then this obligation shall be void.
2. If said bid is accepted by the Obligee and the Principal shall execute and deliver a contract in the form specified by the Obligee (properly completed in accordance with said bid) and shall furnish a bond for his/her faithful performance of said contract, and for the payment of all persons performing labor or furnishing materials in connection therewith, and shall in all other respects perform the agreement created by the acceptance of said bid, then this obligation shall be void.

If said bid is accepted by the Obligee and the Principal shall fail to execute and deliver the contract and the performance and payment bond noted in 2. above executed by this Surety, or other Surety approved by the City of Madison, all within the time specified or any extension thereof, the Principal and Surety agree jointly and severally to forfeit to the Obligee as liquidated damages the sum mentioned above, it being understood that the liability of the Surety for any and all claims hereunder shall in no event exceed the sum of this obligation as stated, and it is further understood that the Principal and Surety reserve the right to recover from the Obligee that portion of the forfeited sum which exceed the actual liquidated damages incurred by the Obligee.

The Surety, for value received, hereby stipulates and agrees that the obligations of said Surety and its bond shall be in no way impaired or affected by an extension of the time within which the Obligee may accept such bid, and said Surety does hereby waive notice of any such extension.

IN WITNESS WHEREOF, the Principal and the Surety have hereunto set their hands and seals, and such of them as are corporations have caused their corporate seals to be hereto affixed and these presents to be signed by their proper officers, on the day and year set forth below.

Seal PRINCIPAL

Name of Principal

By

Date

Name and Title

Seal SURETY

Name of Surety

By

Date

Name and Title

This certifies that I have been duly licensed as an agent for the above company in Wisconsin under National Provider No. _____ for the year _____, and appointed as attorney in fact with authority to execute this bid bond and the payment and performance bond referred to above, which power of attorney has not been revoked.

Date

Agent Signature

Address

City, State and Zip Code

Telephone Number

NOTE TO SURETY & PRINCIPAL

The bid submitted which this bond guarantees shall be rejected if the following instrument is not attached to this bond:

Power of Attorney showing that the agent of Surety is currently authorized to execute bonds on behalf of the Surety, and in the amounts referenced above.

Certificate of Biennial Bid Bond

TIME PERIOD - VALID (FROM/TO)
NAME OF SURETY
NAME OF CONTRACTOR
CERTIFICATE HOLDER <p style="text-align: center;">City of Madison, Wisconsin</p>

This is to certify that a biennial bid bond issued by the above-named Surety is currently on file with the City of Madison.

This certificate is issued as a matter of information and conveys no rights upon the certificate holder and does not amend, extend or alter the coverage of the biennial bid bond.

Cancellation: Should the above policy be cancelled before the expiration date, the issuing Surety will give thirty (30) days written notice to the certificate holder indicated above.

Signature of Authorized Contractor Representative

Date

SECTION H: AGREEMENT

THIS AGREEMENT made this _____ day of _____ in the year Two Thousand and Seventeen between _____ hereinafter called the Contractor, and the City of Madison, Wisconsin, hereinafter called the City.

WHEREAS, the Common Council of the said City of Madison under the provisions of a resolution adopted _____, and by virtue of authority vested in the said Council, has awarded to the Contractor the work of performing certain construction.

NOW, THEREFORE, the Contractor and the City, for the consideration hereinafter named, agree as follows:

1. **Scope of Work.** The Contractor shall, perform the construction, execution and completion of the following listed complete work or improvement in full compliance with the Plans, Specifications, Standard Specifications, Supplemental Specifications, Special Provisions and contract; perform all items of work covered or stipulated in the proposal; perform all altered or extra work; and shall furnish, unless otherwise provided in the contract, all materials, implements, machinery, equipment, tools, supplies, transportation, and labor necessary to the prosecution and completion of the work or improvements:

2017 PARK PLAYGROUND IMPROVEMENTS - GROUP 3 CONTRACT NO. 7929

2. **Completion Date/Contract Time.** Construction work must begin within seven (7) calendar days after the date appearing on mailed written notice to do so shall have been sent to the Contractor and shall be carried on at a rate so as to secure full completion SEE SPECIAL PROVISIONS, the rate of progress and the time of completion being essential conditions of this Agreement.
3. **Contract Price.** The City shall pay to the Contractor at the times, in the manner and on the conditions set forth in said specifications, the sum of _____ (\$ _____) Dollars being the amount bid by such Contractor and which was awarded to him/her as provided by law.
4. **Affirmative Action.** In the performance of the services under this Agreement the Contractor agrees not to discriminate against any employee or applicant because of race, religion, marital status, age, color, sex, disability, national origin or ancestry, income level or source of income, arrest record or conviction record, less than honorable discharge, physical appearance, sexual orientation, gender identity, political beliefs, or student status. The Contractor further agrees not to discriminate against any subcontractor or person who offers to subcontract on this contract because of race, religion, color, age, disability, sex, sexual orientation, gender identity or national origin.

The Contractor agrees that within thirty (30) days after the effective date of this agreement, the Contractor will provide to the City Affirmative Action Division certain workforce utilization statistics, using a form to be furnished by the City.

If the contract is still in effect, or if the City enters into a new agreement with the Contractor, within one year after the date on which the form was required to be provided, the Contractor will provide updated workforce information using a second form, also to be furnished by the City. The second form will be submitted to the City Affirmative Action Division no later than one year after the date on which the first form was required to be provided.

The Contractor further agrees that, for at least twelve (12) months after the effective date of this contract, it will notify the City Affirmative Action Division of each of its job openings at facilities in Dane County for which applicants not already employees of the Contractor are to be considered. The notice will include a job description, classification, qualifications and application procedures

and deadlines. The Contractor agrees to interview and consider candidates referred by the Affirmative Action Division if the candidate meets the minimum qualification standards established by the Contractor, and if the referral is timely. A referral is timely if it is received by the Contractor on or before the date started in the notice.

Articles of Agreement Article I

The Contractor shall take affirmative action in accordance with the provisions of this contract to insure that applicants are employed, and that employees are treated during employment without regard to race, religion, color, age, marital status, disability, sex, sexual orientation, gender identity or national origin and that the employer shall provide harassment free work environment for the realization of the potential of each employee. Such action shall include, but not be limited to, the following: employment, upgrading, demotion or transfer, recruitment or recruitment advertising, layoff or termination, rates of pay or other forms of compensation and selection for training including apprenticeship insofar as it is within the control of the Contractor. The Contractor agrees to post in conspicuous places available to employees and applicants notices to be provided by the City setting out the provisions of the nondiscrimination clauses in this contract.

Article II

The Contractor shall in all solicitations or advertisements for employees placed by or on behalf of the Contractors state that all qualified or qualifiable applicants will be employed without regard to race, religion, color, age, marital status, disability, sex, sexual orientation, gender identity or national origin.

Article III

The Contractor shall send to each labor union or representative of workers with which it has a collective bargaining agreement or other contract or understanding a notice to be provided by the City advising the labor union or worker's representative of the Contractor's equal employment opportunity and affirmative action commitments. Such notices shall be posted in conspicuous places available to employees and applicants for employment.

Article V

The Contractor agrees that it will comply with all provisions of the Affirmative Action Ordinance of the City of Madison, including the contract compliance requirements. The Contractor agrees to submit the model affirmative action plan for public works contractors in a form approved by the Affirmative Action Division Manager.

Article VI

The Contractor will maintain records as required by Section 39.02(9)(f) of the Madison General Ordinances and will provide the City Affirmative Action Division with access to such records and to persons who have relevant and necessary information, as provided in Section 39.02(9)(f). The City agrees to keep all such records confidential, except to the extent that public inspection is required by law.

Article VII

In the event of the Contractor's or subcontractor's failure to comply with the Equal Employment Opportunity and Affirmative Action Provisions of this contract or Section 39.03 and 39.02 of the Madison General Ordinances, it is agreed that the City at its option may do any or all of the following:

1. Cancel, terminate or suspend this Contract in whole or in part.

2. Declare the Contractor ineligible for further City contracts until the Affirmative Action requirements are met.
3. Recover on behalf of the City from the prime Contractor 0.5 percent of the contract award price for each week that such party fails or refuses to comply, in the nature of liquidated damages, but not to exceed a total of five percent (5%) of the contract price, or five thousand dollars (\$5,000), whichever is less. Under public works contracts, if a subcontractor is in noncompliance, the City may recover liquidated damages from the prime Contractor in the manner described above. The preceding sentence shall not be construed to prohibit a prime Contractor from recovering the amount of such damage from the non-complying subcontractor.

Article VIII

The Contractor shall include the above provisions of this contract in every subcontract so that such provisions will be binding upon each subcontractor. The Contractor shall take such action with respect to any subcontractor as necessary to enforce such provisions, including sanctions provided for noncompliance.

Article IX

The Contractor shall allow the maximum feasible opportunity to small business enterprises to compete for any subcontracts entered into pursuant to this contract. (In federally funded contracts the terms "DBE, MBE and WBE" shall be substituted for the term "small business" in this Article.)

5. Substance Abuse Prevention Program Required. Prior to commencing work on the Contract, the Contractor, and any Subcontractor, shall have in place a written program for the prevention of substance abuse among its employees as required under Wis. Stat. Sec. 103.503.
6. **Contractor Hiring Practices.**

Ban the Box - Arrest and Criminal Background Checks. (Sec. 39.08, MGO)

This provision applies to all prime contractors on contracts entered into on or after January 1, 2016, and all subcontractors who are required to meet prequalification requirements under MGO 33.07(7)(l), MGO as of the first time they seek or renew pre-qualification status on or after January 1, 2016. The City will monitor compliance of subcontractors through the pre-qualification process.

- a. **Definitions.** For purposes of this section, "Arrest and Conviction Record" includes, but is not limited to, information indicating that a person has been questioned, apprehended, taken into custody or detention, held for investigation, arrested, charged with, indicted or tried for any felony, misdemeanor or other offense pursuant to any law enforcement or military authority.

"Conviction record" includes, but is not limited to, information indicating that a person has been convicted of a felony, misdemeanor or other offense, placed on probation, fined, imprisoned or paroled pursuant to any law enforcement or military authority.

"Background Check" means the process of checking an applicant's arrest and conviction record, through any means.

- b. **Requirements.** For the duration of this Contract, the Contractor shall:
 1. Remove from all job application forms any questions, check boxes, or other inquiries regarding an applicant's arrest and conviction record, as defined herein.

2. Refrain from asking an applicant in any manner about their arrest or conviction record until after conditional offer of employment is made to the applicant in question.
3. Refrain from conducting a formal or informal background check or making any other inquiry using any privately or publicly available means of obtaining the arrest or conviction record of an applicant until after a conditional offer of employment is made to the applicant in question.
4. Make information about this ordinance available to applicants and existing employees, and post notices in prominent locations at the workplace with information about the ordinance and complaint procedure using language provided by the City.
5. Comply with all other provisions of Sec. 39.08, MGO.

c. Exemptions: This section shall not apply when:

1. Hiring for a position where certain convictions or violations are a bar to employment in that position under applicable law, or
2. Hiring a position for which information about criminal or arrest record, or a background check is required by law to be performed at a time or in a manner that would otherwise be prohibited by this ordinance, including a licensed trade or profession where the licensing authority explicitly authorizes or requires the inquiry in question.

To be exempt, Contractor has the burden of demonstrating that there is an applicable law or regulation that requires the hiring practice in question, if so, the contractor is exempt from all of the requirements of this ordinance for the position(s) in question.

**2017 PARK PLAYGROUND IMPROVEMENTS - GROUP 3
CONTRACT NO. 7929**

IN WITNESS WHEREOF, the Contractor has hereunto set his/her hand and seal and the City has caused these presents to be sealed with its corporate seal and to be subscribed by its Mayor and City Clerk the day and year first above written.

Countersigned:

	Company Name
_____ Witness	_____ Date
_____ Witness	_____ Date
	_____ President
	_____ Secretary
	_____ Date

CITY OF MADISON, WISCONSIN

Provisions have been made to pay the liability that will accrue under this contract.

Approved as to form:

_____ Finance Director	_____ City Attorney
Signed this _____ day of _____, 20_____	
_____ Witness	_____ Mayor
_____ Witness	_____ City Clerk
	_____ Date
	_____ Date

SECTION I: PAYMENT AND PERFORMANCE BOND

KNOW ALL MEN BY THESE PRESENTS, that we _____
as _____ principal, _____ and

Company of _____ as surety, are held and firmly bound unto the City of
Madison, Wisconsin, in the sum of _____ (\$_____) Dollars, lawful money of the
United States, for the payment of which sum to the City of Madison, we hereby bind ourselves and our
respective executors and administrators firmly by these presents.

The condition of this Bond is such that if the above bounden shall on his/her part fully and faithfully
perform all of the terms of the Contract entered into between him/herself and the City of Madison for the
construction of:

**2017 PARK PLAYGROUND IMPROVEMENTS - GROUP 3
CONTRACT NO. 7929**

in Madison, Wisconsin, and shall pay all claims for labor performed and material furnished in the
prosecution of said work, and save the City harmless from all claims for damages because of negligence
in the prosecution of said work, and shall save harmless the said City from all claims for compensation
(under Chapter 102, Wisconsin Statutes) of employees and employees of subcontractor, then this Bond is
to be void, otherwise of full force, virtue and effect.

Signed and sealed this _____ day of _____

Countersigned:

Company Name (Principal)

Witness

President Seal

Secretary

Approved as to form:

Surety Seal

Salary Employee Commission

City Attorney

By _____
Attorney-in-Fact

This certifies that I have been duly licensed as an agent for the above company in Wisconsin under
National Producer Number _____ for the year _____, and appointed as attorney-in-fact
with authority to execute this payment and performance bond which power of attorney has not been
revoked.

Date

Agent Signature